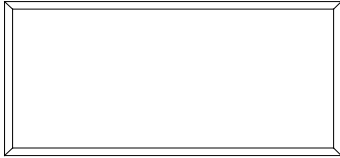


JOC1011	60	300	$I_F=10\text{mA}$ $V_{CE}=5\text{V}$
JOC1012	63	125	
JOC1013	100	200	
JOC1014	160	320	
JOC1012	22	-	$I_F=1\text{mA}$ $V_{CE}=5\text{V}$
JOC1013	34	-	
JOC1014	56	-	

ORDERING AND MARKING INFORMATION**MARKING INFORMATION**

Characteristics Curves

FIG.1: Forward Current vs. Ambient Temperature

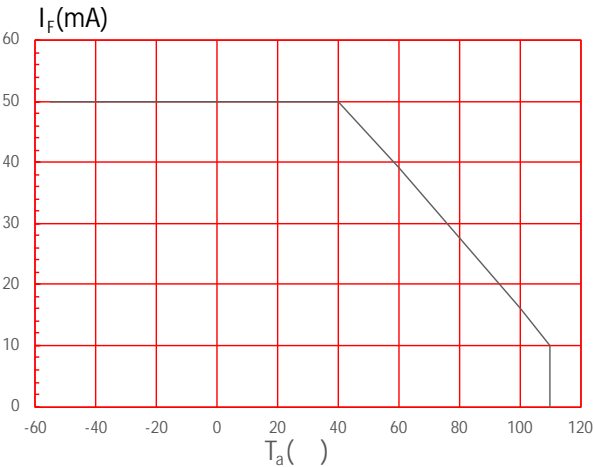


FIG.2: Collector Power Dissipation vs. Ambient Temperature

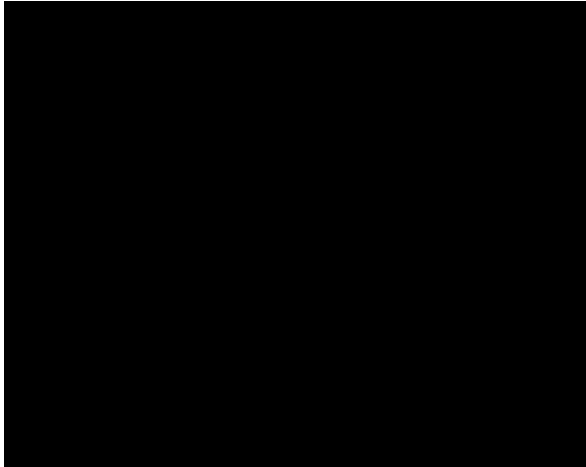


FIG.7: Normalized Current Transfer Ratio vs. Ambient Temperature

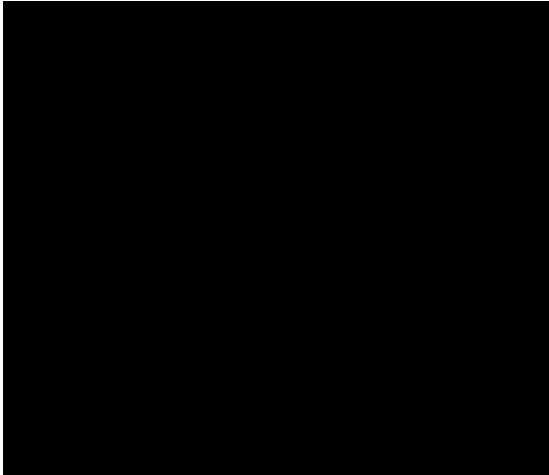


FIG.8: Normalized Collector-emitter Saturation Voltage vs. Ambient Temperature

Test Circuits

FIG.11: Test Circuits of Response Time

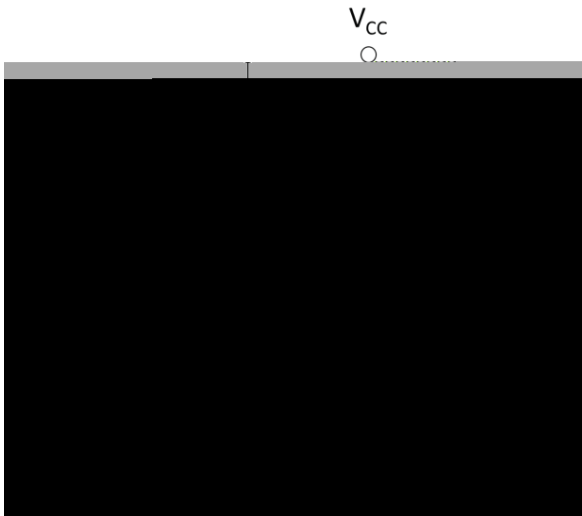


FIG.12: Curves of Response Time

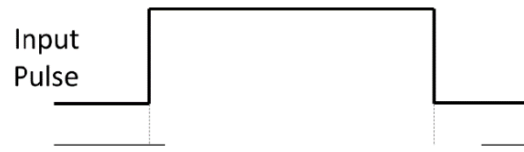
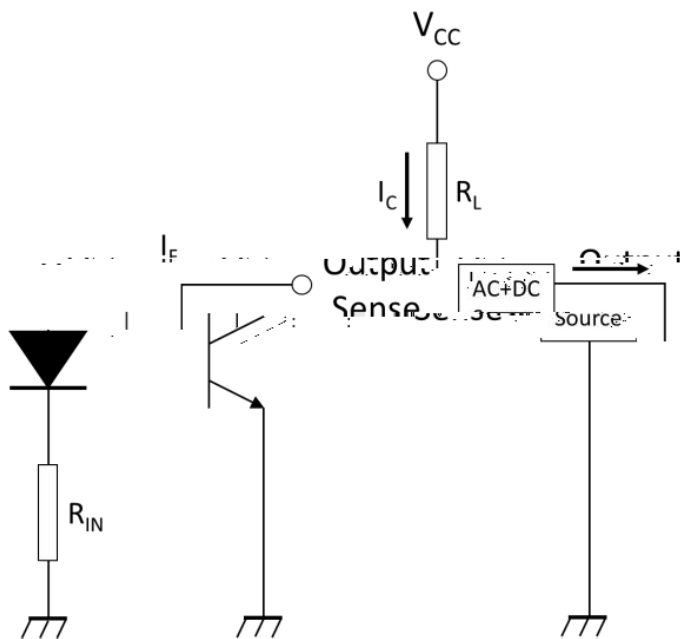


FIG.13: Test Circuits of Frequency Response

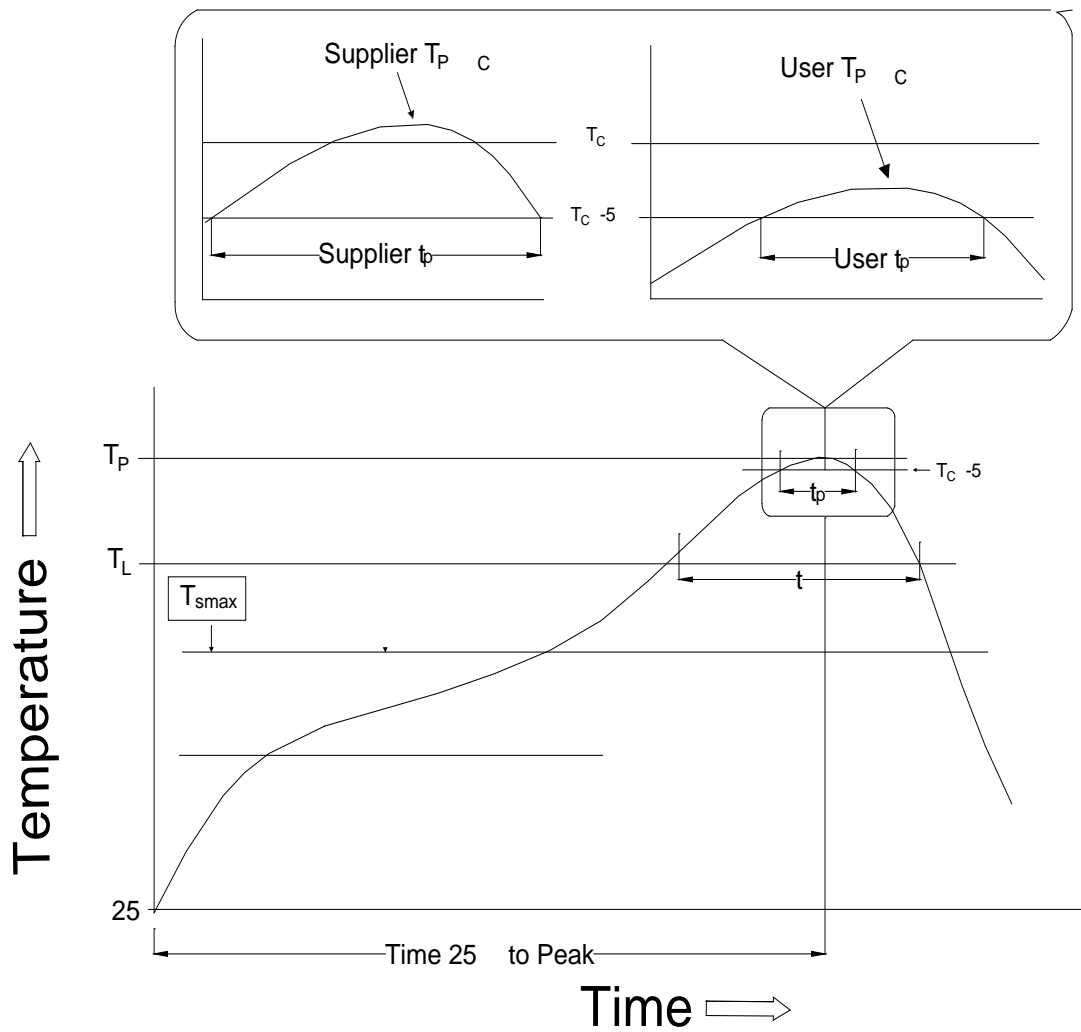


CARRIER TAPE SPECIFICATIONS (Dimensions in mm unless otherwise stated)

Option T1



REFLOW INFORMATION



Information furnished in this document is believed to be accurate and reliable. However, Jiangsu JieJie Microelectronics Co., Ltd. assumes no responsibility for the consequences of use without consideration for such information nor use beyond it. Information mentioned in this document is subject to change without notice, apart from that when an agreement is signed, Jiangsu JieJie complies with the agreement.

Products and information provided in this document have no infringement of patents. Jiangsu JieJie assumes no responsibility for any infringement of other rights of third parties which may result from the use of such products and information. This document supersedes and replaces all information previously supplied.



is a registered trademark of Jiangsu JieJie Microelectronics Co., Ltd.

Copyright © 2025 Jiangsu JieJie Microelectronics Co., Ltd. All rights reserved.