



## JOC247

Rev.A.1.0

### DESCRIPTION:

The JOC247 is a photoelectric coupler composed of light-emitting diode and photo transistor. It is packaged in a 16-pin at SSOP16. The products are widely used in DC-DC converter, communications equipment, programmable controller and signal transmission.

### MAIN FEATURES

Current transfer ratio: 50%-600% ( $I_F=5\text{mA}$ ,  $V_{CE}=5\text{V}$ ,  $T_a=25$  )

## ELECTRICAL CHARACTERISTICS (Temperature=25°C)

Parameter		Symbol	Condition	Min.	Typ.	Max.	Unit
Input	Forward Voltage	$V_F$	$I_F=10\text{mA}$	-	1.2	1.3	V
			$I_F=20\text{mA}$	-	1.24	1.4	
	Reverse Current	$I_R$	$V_R=6\text{V}$	-	-	1	$\mu\text{A}$
	Terminal Capacitance	C					

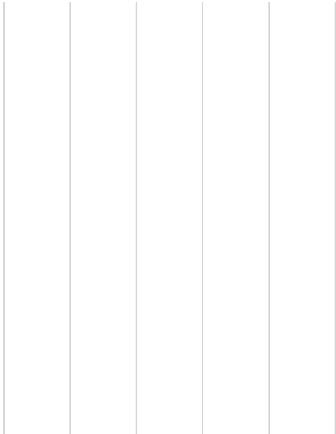
ORDERING AND MARKING INFORMATION

MARKING INFORMATION

JOC  
247  
YAWW



**FIG.7:** Normalized Current Transfer Ratio vs. Ambient Temperature



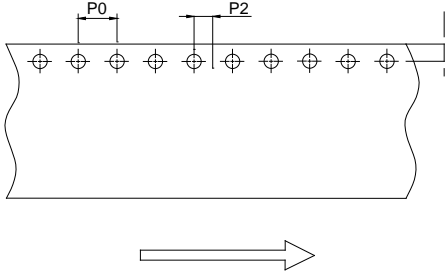
**FIG.8:** Normalized Collector-emitter Saturation Voltage vs. Ambient Temperature



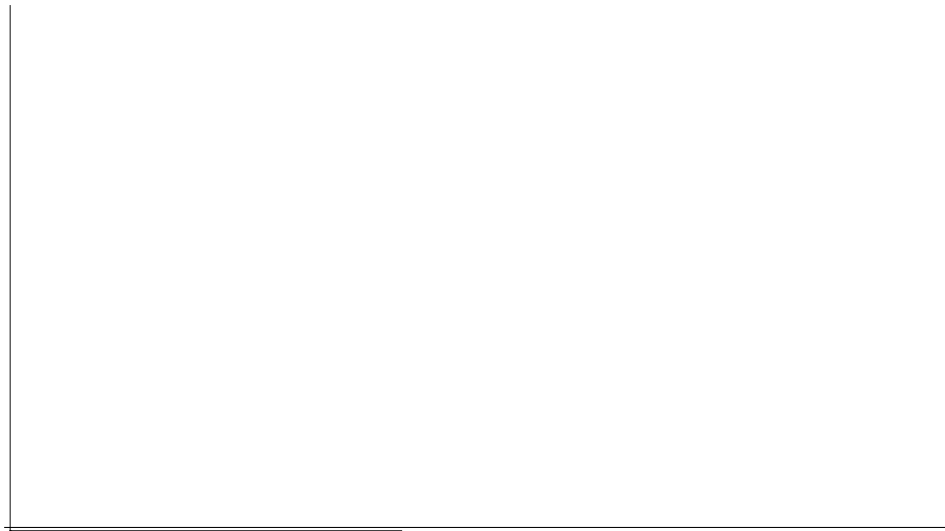
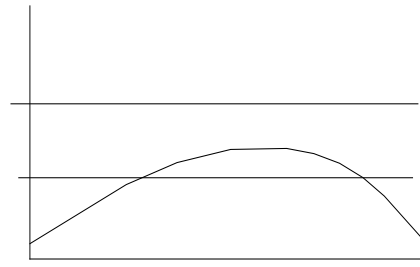
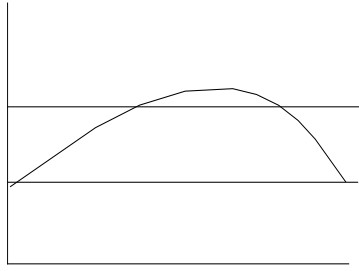
Package Dimension (Unit: mm)



CARRIER TAPE SPECIFICATIONS (Dimensions in mm unless otherwise stated)




REFLOW INFORMATION



Information furnished in this document is believed to be accurate and reliable. However, Jiangsu JieJie Microelectronics Co., Ltd. assumes no responsibility for the consequences of use without consideration for such information nor use beyond it. Information mentioned in this document is subject to change without notice, apart from that when an agreement is signed, Jiangsu JieJie complies with the agreement.

Products and information provided in this document have no infringement of patents. Jiangsu JieJie assumes no responsibility for any infringement of other rights of third parties which may result from the use of such products and information. This document supersedes and replaces all information previously supplied.

 is a registered trademark of Jiangsu JieJie Microelectronics Co., Ltd.

Copyright © 2025 Jiangsu JieJie Microelectronics Co., Ltd. All rights reserved.