

## Description

JOR417D8

MOSFET

The JOR417D8 Photo relay consist of a photo MOSFET Photovoltage generator infrared LED.

## Features

Normally opened (SPST)

200V

Control 200V AC or DC voltage

180mA

Switch 180mA load

Controls low-level analog sings

High sensitivity, low conductivity resistance

Low-level off state leakage current

5000V

High isolation voltage 5000V

RoHS

Lead free, meet RoHS standards

UL VDE CQC

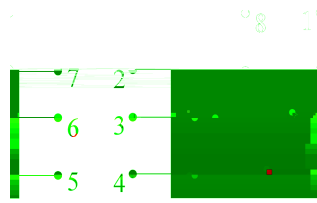
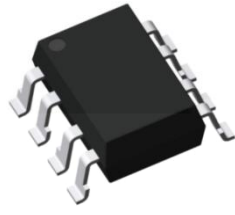
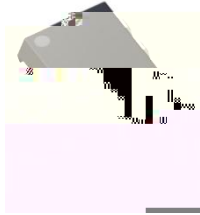
Meet safety standard approval: UL ,

R

---



## Package and Schematic Diagram



Pin Configuration

1. AN	2. CA
5. D1	6. D2
7. D3	8. D4

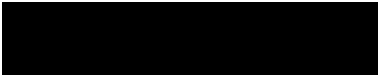
SMD

ORDERING AND MARKING INFORMATION	
<b>MARKING INFORMATION</b>	
<p><b>JOR</b></p> <p><b>417</b></p> <p><b>YAWW</b></p>	<p><b>JOR</b></p>
<b>ORDERING INFORMATION</b>	<b>LABEL INFORMATION</b>
<p><b>JOR (Y)(Z)-G</b></p>	
<p><b>JO</b> – Company Abbr</p> <p>– Part Number</p> <p><b>XSX</b> <b>O</b></p> <p><b>Y</b> – Lead Form Option (M/S/SL/None)</p> <p><b>Z</b> – Tape and Reel Option (T1/T2)</p> <p><b>G</b> – Green</p>	

---

## Insulation and Safety related specifications

Item	Symbol	Value	Unit	Remark
Creepage Distance	L	7.0	mm	Measured from input terminals to output terminals, shortest distance path along body
Clearance Distance	L	7.0	mm	Measured from input terminals to output terminals, shortest distance through air
Insulation Thickness	DTI	0.4	mm	Insulation thickness between emitter and detector





## Electro-optical Characteristics (Ta= 25 )

Parameter		Symbol	Condition	Min.	Typ.	Max.	Unit
Input	LED LED operate current	$I_{Fon}$	$I_L = 0.18A$	-	1.2	3	mA
	LED LED turn off current	$I_{Foff}$	$I_L = 0.18A$	0.05	1.1	-	mA
	LED LED dropout voltage	$V_F$	$I_F = 5mA$	1	1.3	1.4	V
Output	On resistance	$R_{on}$	$I_F = 5mA, I_L = 0.18A$ Within 1s on time	-	2.2	5	$\Omega$
	Off state leakage current	$I_{Leak}$	$I_F = 0 mA$ $V_L = 200V$	-	-	1000	nA
Transfer Characteristics	Turn on time	$T_{on}$	$I_F = 5mA$ $I_L = 0.18A$	-	0.36	2	ms
	Turn off time	$T_{off}$	$I_F = 5mA$ $I_L = 0.18A$	-	0.12	1	ms
	I/O I/O capacitance	$C_{ISO}$	$f = 1 MHz$ $V_B = 0V$	-	0.8	1.5	pF
	I/O Initial I/O isolation resistance	$R_{ISO}$	500 V DC	1000	-	-	M

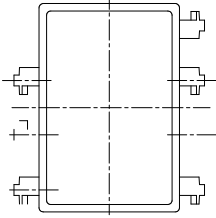




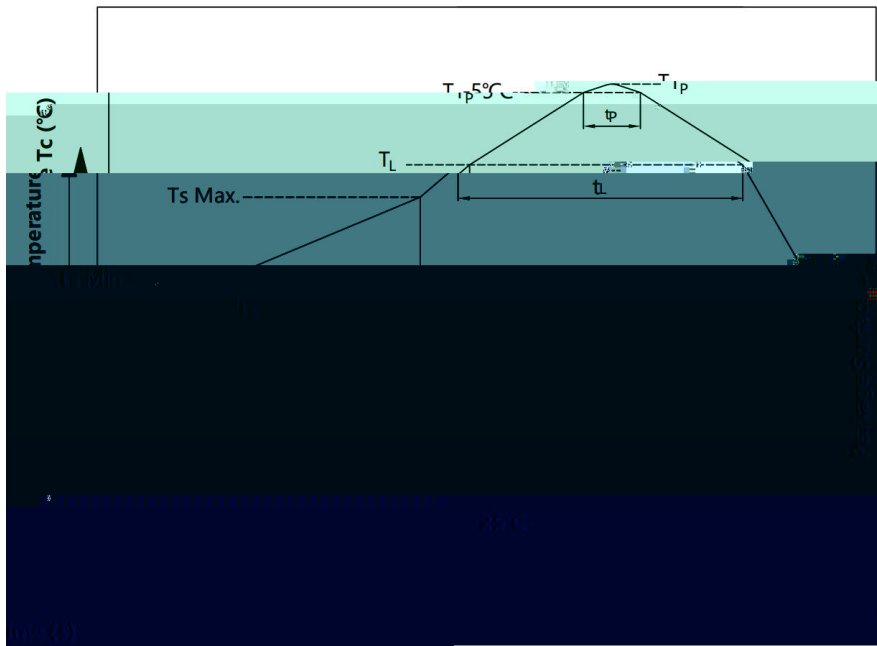
---

## Outline Dimensions

DIP8



## Solder Reflow Profile



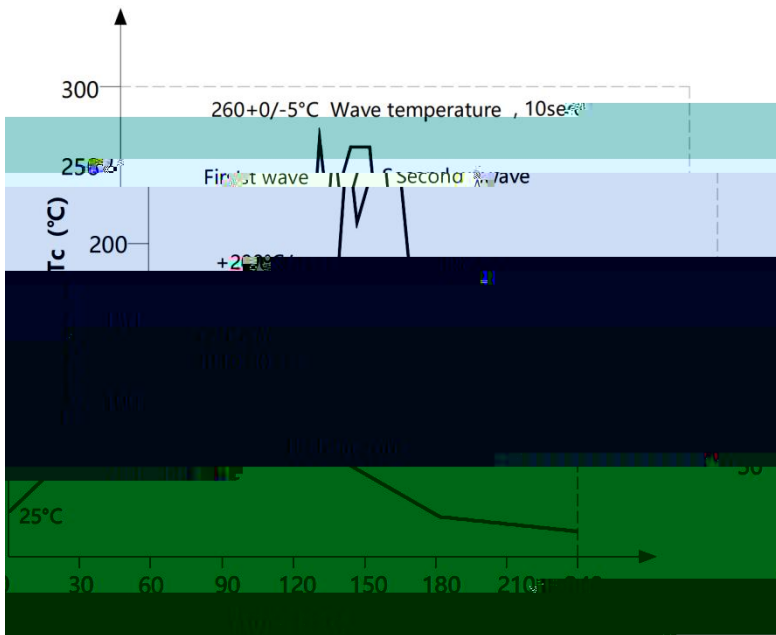
Item	Symbol	Min.	Max.	Unit
Preheat Temperature	$T_s$	150	200	
Preheat Time	$t_s$	60	120	s
Ramp-Up Rate ( $T_L$ to $T_p$ )	-	-	3	/s
Liquidus Temperature	$T_L$	217		
Time Above $T_L$	$t_L$	60	150	s
Peak Temperature	$T_p$	-	260	
Time During Which $T_c$ Is Between ( $T_p-5$ ) and $T_p$	$t_p$	-	30	s
Ramp-down Rate( $T_p$ to $T_L$ )	-	-	6	/s

Note

- c hich in B

---

## Wave Soldering Profile



## Soldering with hand soldering iron

A.

---

## Packing

Summary table

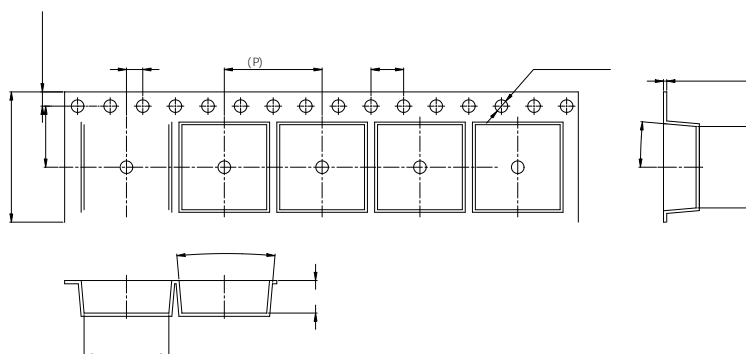
Package Type	Packing Form	Quantity per Reel	Quantity per Box	Quantity per Carton	Antistatic Bag Specification	Box Specification	Carton Specification	Note
DIP8	Tube (500*12*11mm)	45 / /tube	50 / tubes/box	10 / /ctn		52.5*12.8*5.6cm	53.5*27.5*30cm	
SMD8	Reel ( 330mm )	1000 / /reel	2 / /box	10 / /ctn	380*380mm	34*6*34cm	62*36*36.5cm	
DIP8	Tube (500*12*11mm)	45pcs /tube	50 tubes/box	10 boxes /ctn	NA	52.5*12.8*5.6cm	53.5*27.5*30cm	Endplug (blue) and Endplug (white) keep the direction
SMD8	Reel ( 330mm Blue)	1000 pcs /reel	2 reels /box	10 boxes /ctn	380*380mm	34*6*34cm	62*36*36.5cm	

### DIP8 Tape & Reel

- 1) 45  
Qty/reel 45 pcs.
- 2) 22500  
Qty/ctn 22500 pcs.
- 3) 50  
Inner packing 50 tube/box.
- 4) Schematic

### SMD8 Tape & Reel

- 5) 1000  
Qty/reel 1000 pcs.
- 6) 20000  
Qty/ctn 20000 pcs.
- 7) 2  
Inner packing 2 reels/box.
- 8) Schematic



Unit mm

## AttentZon

JieJie continuously improve quality, reliability, f or design. We reserve the right to change this document without notice.

Please use in accordance with the product specification.

**R U T X D H D V H**

a\*

cf

the