

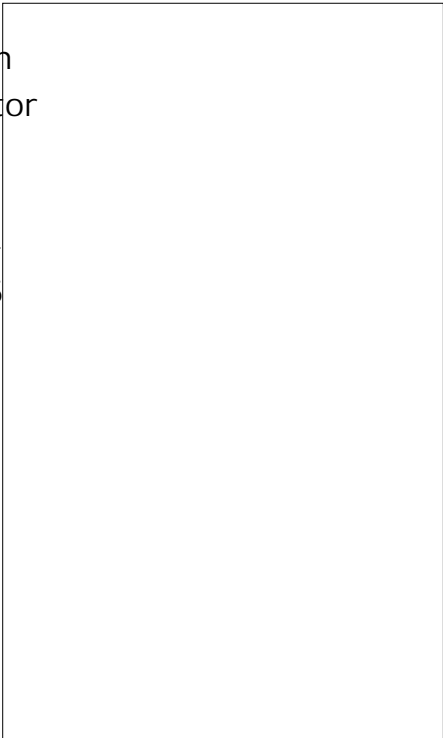


ACJ T40510C 4A TRIAC

Rev. A. 1.1

DESCRIPTION:

The ACJT40510C triac is suitable for general purpose AC switching. It can be used as an ON/OFF function in applications such as heating regulation, induction motor starting circuits, for phase control operation in light dimmers, motor speed controllers. The ACJT40510C embeds a TVS structure to absorb the inductive turn-energy such as those described in the IEC 61000-4-5 standards. Package TO-220C is RoHS compliant.



MAIN FEATURES

ABSOLUTE MAXIMUM RATINGS

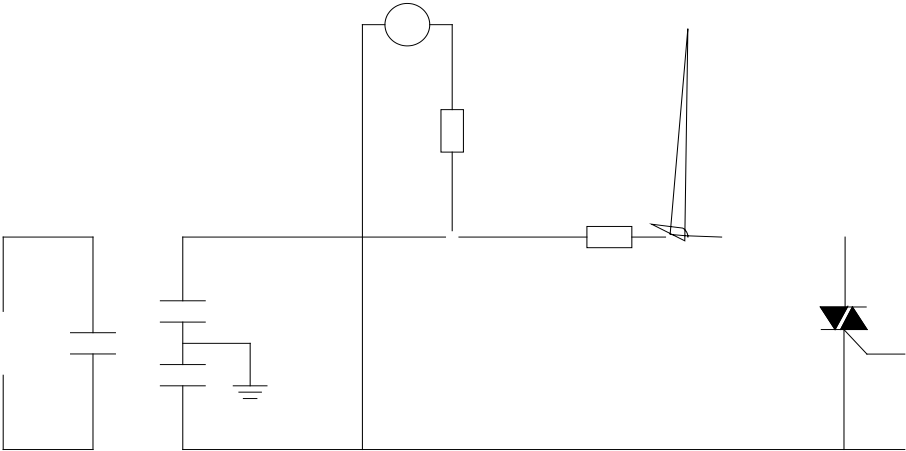
Parameter	Symbol	Value	Unit
Storage junction temperature range	T <sub>stg</sub>	-40~150	
Operating junction temperature range	T <sub>j</sub>	-40~125	
Repetitive peak off-state voltage (f <sub>j</sub> =25 )	V <sub>DRM</sub>	1000	V
Repetitive peak reverse voltage (f <sub>j</sub> =25 )	V <sub>RRM</sub>	1000	V





FIG.1 :

FIG.7 Test circuit for inductive loads to IEC 6100045 standards





PACKAGE MECHANICAL DATA



