

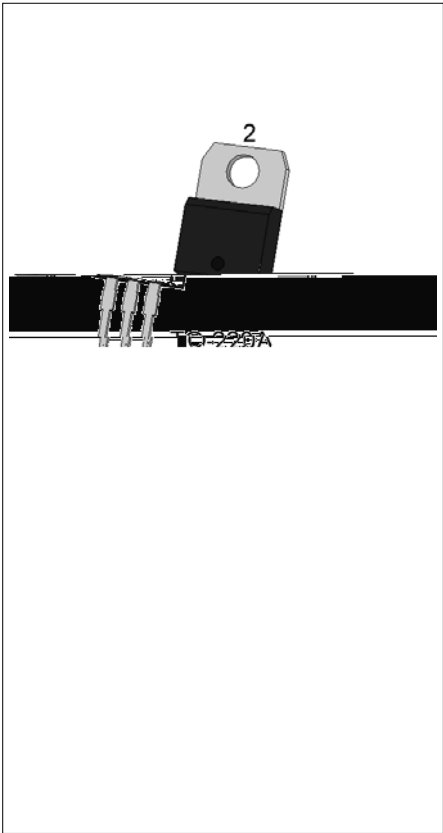


ACJT625-8A 6A TRIAC

Rev.A.1.1

DESCRIPTION:

ACJT625-8A 6A TRIAC
 AC 60/50Hz VDR 800V
 IGT 6A
 ITRM 6A
 IGT 25/25/25A
 IEC 61000-4-5
 IGT 6A
 ITRM 6A
 IGT 25/25/25A
 IEC 61000-4-5
 IGT 6A
 ITRM 6A
 IGT 25/25/25A



MAIN FEATURES

Symbol	Value	Unit
I_{TRM}	6	A
V_{DR} / V_R	800	V
$I_{GT} / /$	25/25/25	A

ABSOLUTE MAXIMUM RATINGS

Parameter	Symbol	Value	Unit
Storage Temperature	T_S	-40-150	
Junction Temperature	T_j	-40-125	
Peak Repetitive Forward Current (Tc=25°C)	V_{DR}	800	V
Peak Forward Voltage (Tc=25°C)	V_R	800	V
Peak Forward Current (Tc=100°C)	I_{TRM}	6	A
Non-repetitive Forward Current (Tc=25°C, p=20µs, j=25)	I_S	60	A
Non-repetitive Forward Current (Tc=25°C, p=16.6µs, j=25)		66	
Forward Current Squared (Tc=25°C, p=10µs, j=25)	I^2t	18	A ² s
Gate Current (Ic=2x IGT, f=100Hz, Tc=125°C)	I_{GT}	100	A s
Gate Current (Tc=25°C, p=20µs, j=125)	I_{GM}	4	A

P_{GM}	f_T	$f=125$)	P_{GM}	0.5	W
P_{GM}			P_{GM}	10	W
V_p		($T=25$; ρ -16 -FIG.7)	V_p	3.5	V

ELECTRICAL CHARACTERISTICS $f=25$ 

Symbol	Test Condition	Quadrant	Value		Unit
I_{GT}	$V_D = 12V$ $L=33$	- -	MAX .	25	mA
V_{GT}		- -	MAX .	1	V

V_{GD}



ORDERING INFORMATION

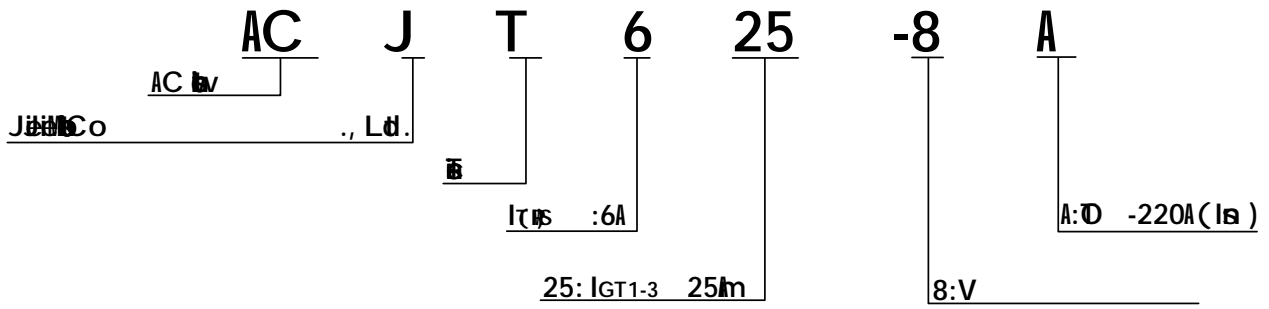


FIG.1: ~~Micro~~

□ ~~ta~~

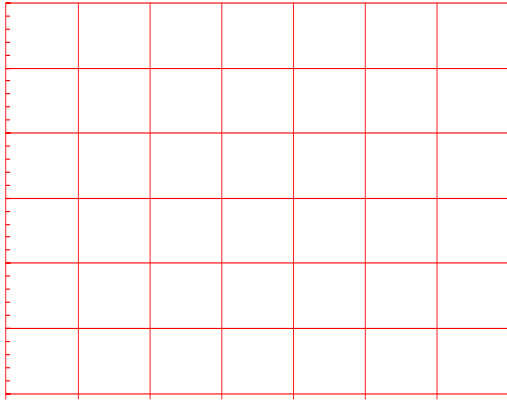


FIG.2: ~~Micro~~

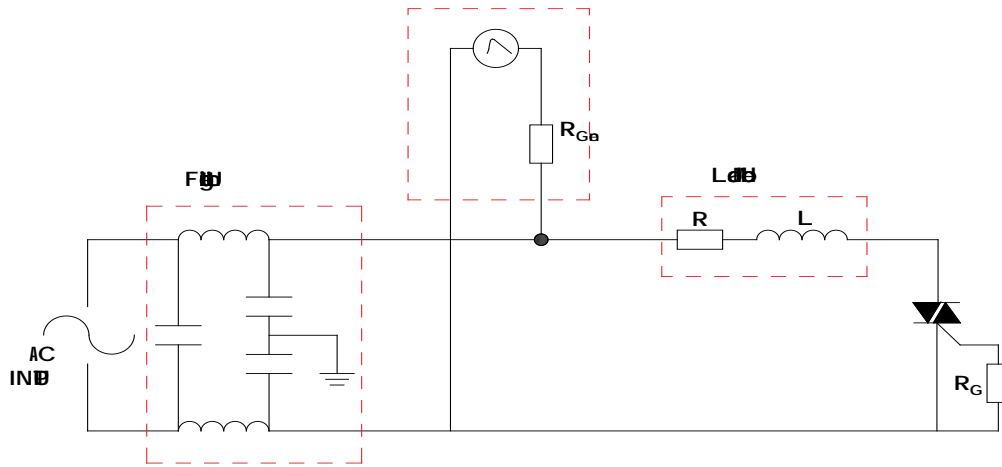
~~ta~~

□

FIG.7

-61000-4-5

IEC61000-4-5
SgG



ORDERING INFORMATION

Order code	Voltage V_{DRM}/V_{RRM} (V)	IGT(mA)	Package	Base qty. (pcs)	Delivery mode
ACJT625-8A	800	25	TO-220A(Ins)	50	Tube

Document Revision History

Date	Version	Change
Apr. 14, 2023	A. 1.0	Initial
03, 2025	A. 1.1	REWORK PACKAGE MECHANICAL DRAW

PACKAGE MECHANICAL DATA

