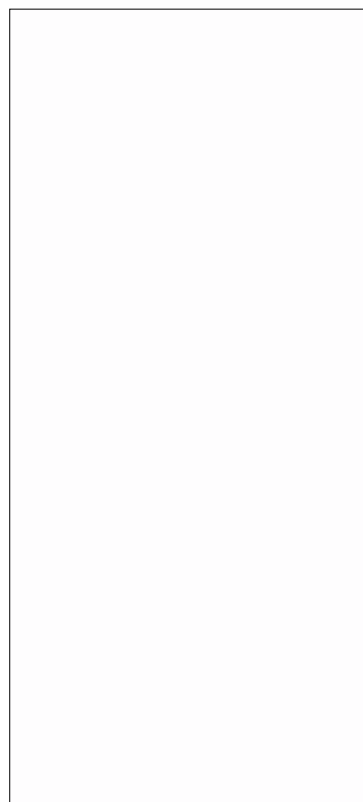




DESCRIPTION:

With high ability to withstand the shock loading of large current, JCT616F of silicon controlled rectifiers provides high dV/dt rate with strong resistance to electromagnetic interference. It is especially recommended for use on solid state relay, motorcycle, power charger, T-tools etc. From all three terminals to external heatsink, JCT616F provides a rated insulation voltage of 2000 V_{RMS} , complying with UL standards (File ref: E252906). Package TO-220F is RoHS compliant.



MAIN FEATURES

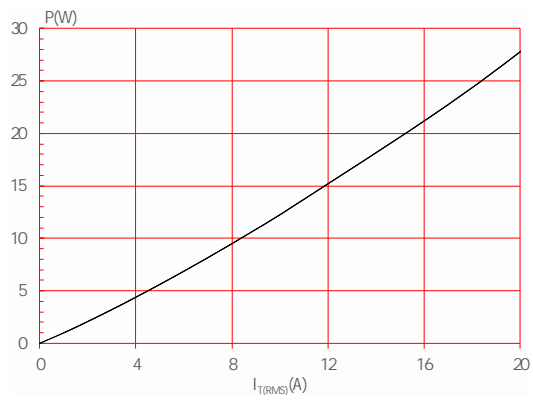
ABSOLUTE MAXIMUM RATINGS

| | | | |
|--------------------------------------|-----------|---------|--|
| | | | |
| Storage junction temperature range | T_{stg} | -40-150 | |
| Operating junction temperature range | T_j | | |

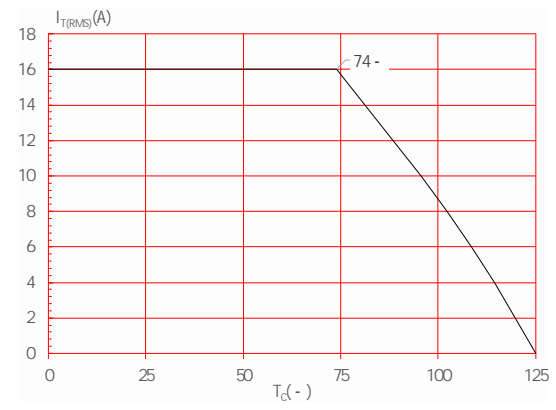




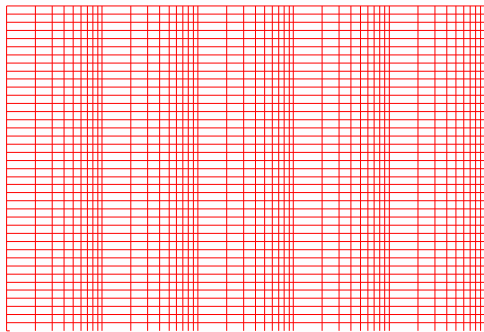
Maximum power dissipation versus RMS on-state current



RMS on-state current versus case temperature



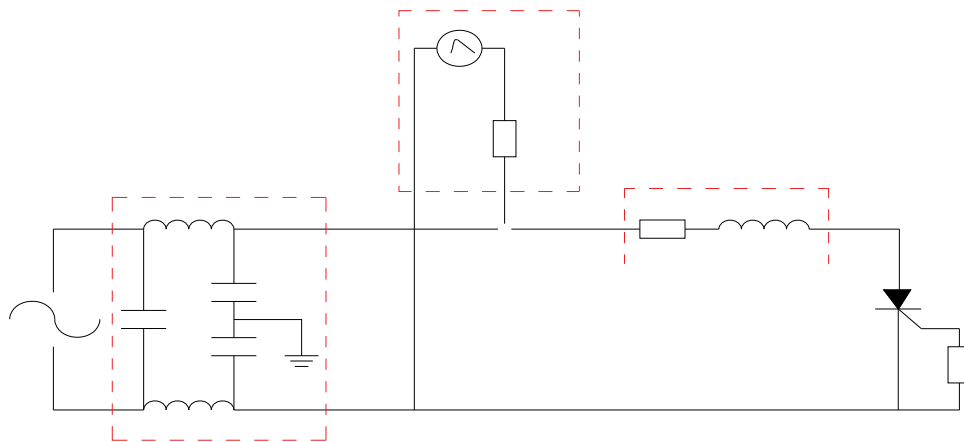
Surge peak on-state current versus number of cycles



On-state characteristics

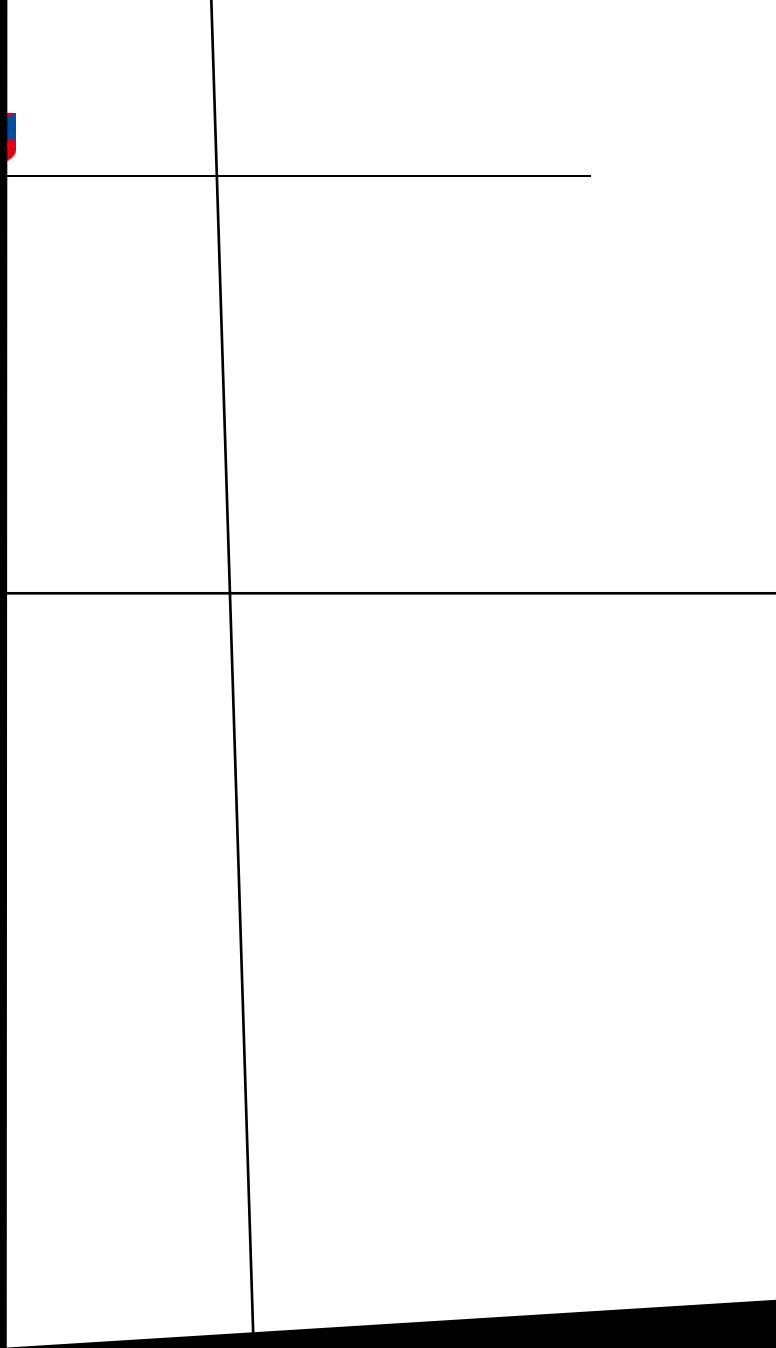


FIG.7 Test circuit for inductive and resistive loads to IEC-61000-4-5 standards.






TEL





Information furnished in this document is believed to be accurate and reliable. However, Jiangsu JieJie Microelectronics Co., Ltd. assumes no responsibility for the consequences of use without consideration for such information nor use beyond it. Information mentioned in this document is subject to change without notice, apart from that when an agreement is signed, Jiangsu JieJie complies with the agreement. Products and information provided in this document have no infringement of patents. Jiangsu JieJie assumes no responsibility for any infringement of other rights of third parties which may result from the use of such products and information. This document supersedes and replaces all information previously supplied.

 is a registered trademark of Jiangsu JieJie Microelectronics Co., Ltd. Copyright © 2025 Jiangsu JieJie Microelectronics Co., Ltd. All rights reserved.