



JCT812TC 12A SCR

Rev.A.1.1

DESCRIPTION:

JCT812TC silicon controlled rectifier is specifically designed for medium power switching and phase control applications. High current density due to mesa technology; SIPOS and Glass Passivation technology used has reliable operation up to 125 junction temperature. Low I_{GT} parts available. Package TO-220C is RoHS compliant.

MAIN FEATURES

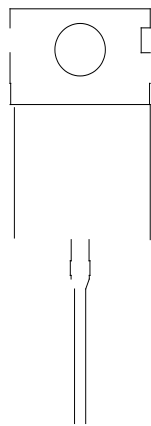
Symbol	Value	Unit
$I_{T(RMS)}$	12	A
V_{DRM}/V_{RRM}	800	V
I_{GT}	5	mA

ABSOLUTE MAXIMUM

ORDERING INFORMATION

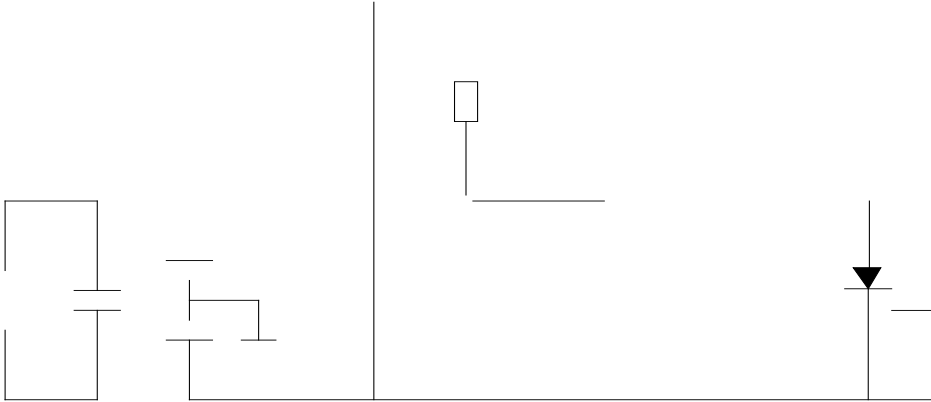
J	CT	8	12	T	C
JieJie Microelectronics Co., Ltd.	SCRs	8:V _{DRM} /V _{RRM} 800V	I _{T(RMS)} :12A	T:I _{GT} 5mA	C:TO-220C

MARKING



JCT812TC

J

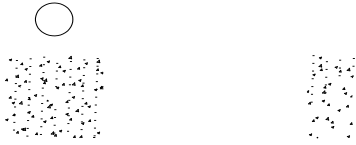


ORDERING INFORMATION

Order code	Voltage V_{DRM}/V_{RRM} (V)	IGT(mA)	Package	Base qty. (pcs)	Delivery mode
JCT812TC	800	5	TO-220C	50	Tube

Document

PACKAGE MECHANICAL DATA



Information furnished in this document is believed to be accurate and reliable.
However, Jiangsu JieJie Microelectronics Co., Ltd.