

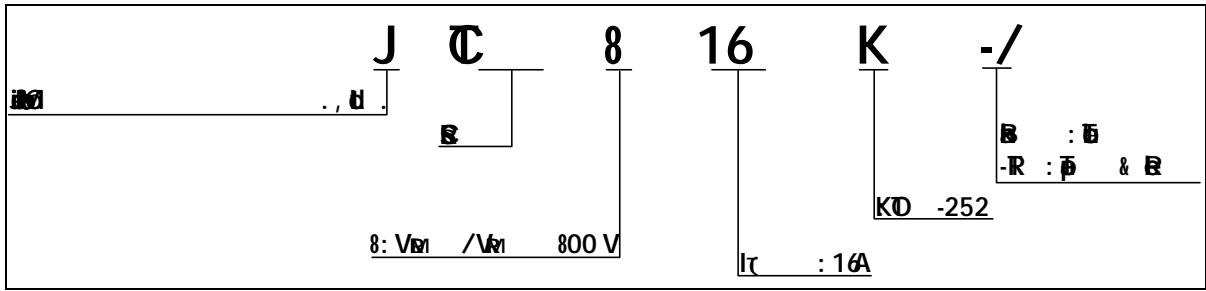


$P_{CE}$ ( $j=125$ )	$P_{CE}$	1	W
$P_{AV}$	$P_{AV}$	20	W
$V_p$ ( $j=25$ ; $\theta_{JA} = 8$ )	$V_p$	0.5	V

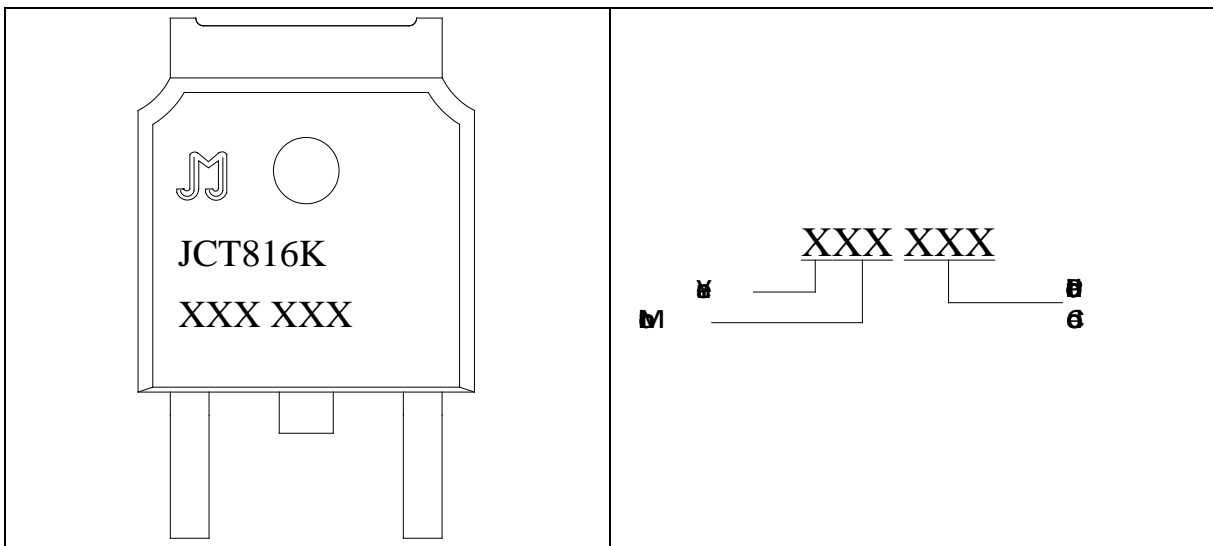
ELECTRICAL CHARACTERISTICS ( $T_c=25$ )

$\theta$	Conditions	$\theta$			$\theta$
		M	J	N	
$I_C$	$V_D=12V$ $L=33$	-	-	15	A
$V_C$		-	-	1	V

ORDERING INFORMATION

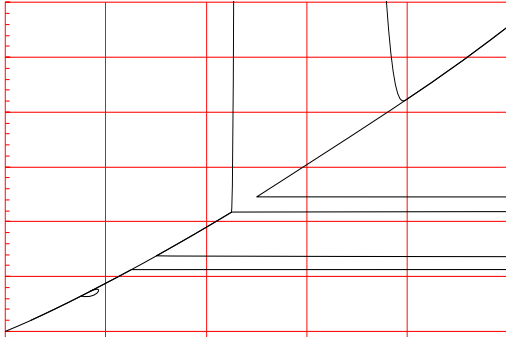


MARKING

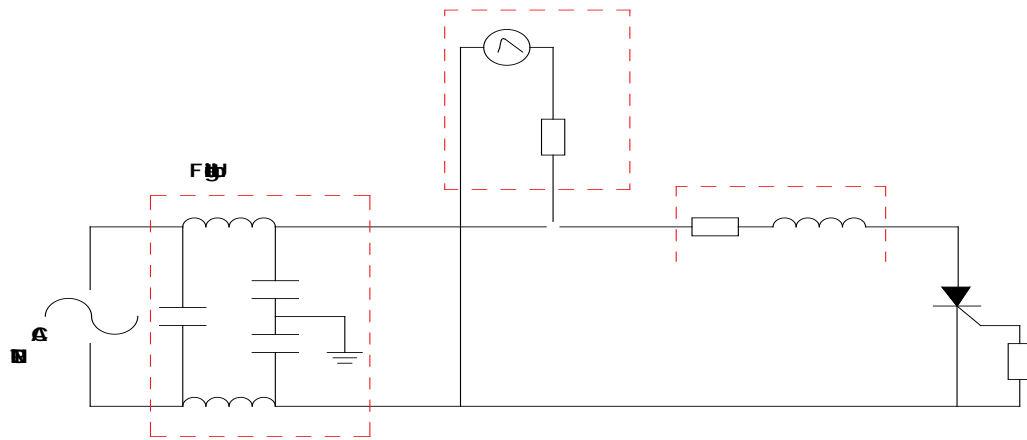


FI : 0.1  
M - 0.1

FI M - 0.1  
0.2:



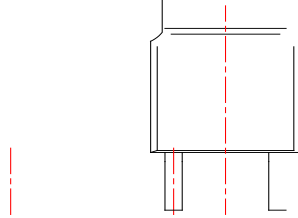




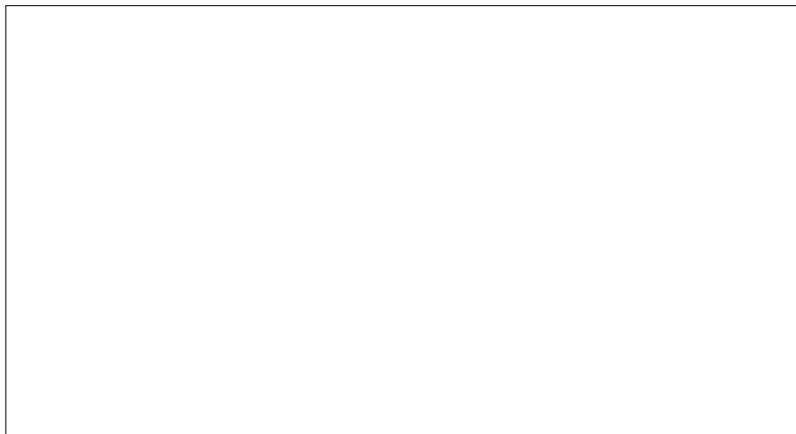
ORDERING INFORMATION

Part Number	$V_{DRM} / V_{RM}$ (V)	I <sub>DRM</sub> (A)	Surge	Burst	D <sub>th</sub>
CT 816K	800	15	D -2		

PACKAGE MECHANICAL DATA



R	Dh					
	M			b		
	M	∅	M	M	∅	M
A	2.10		2.50	0.083		0.098
A	0		0.15	0		0.006
B	0.66		0.86	0.026		0.034
B	5.18		5.48	0.202		0.216
C	0.40		0.60	0.016		0.024
∅	0.44		0.58	0.017		0.023
D	5.90		6.30	0.232		0.248
D						
E	6.40		6.80	0.252		0.268
E	4.63			0.182		
G	4.47		4.67	0.176		0.184
G	2.18		2.38	0.086		0.094
L	1.09		1.21	0.043		0.048
R	1.35		1.65	0.053		0.065





11111111  
111111  
111111111  
1111111111  
1111111111

111111