

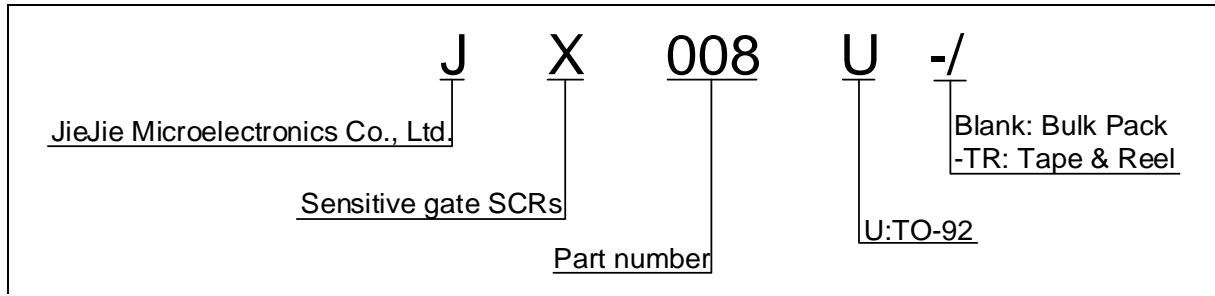


>L\$\$, I '\$", 5'GYbg]h]jY'G7F

FYj"5"&"%

The JX008U SCR provides high dV/dt rate with strong resistance to electromagnetic interface. It is especially recommended for use on residual current circuit breaker, straight hair, igniter etc. Complying with UL standards (File ref: E252906). Package TO-92 is RoHS compliant.

Symbol	Value	Unit
$I_{T(RMS)}$	0.8	A
V_{DRM} / V_{RRM}	800	V
I_{GT}	200	μA



>L\$\$, I''

 >]Y>]Y' A]WfcY`YWhfcb]Wg'7c"z'@hX"

::; "%.'Maximum power dissipation versus RMS on-state current

::; "&.'RMS on-state current versus case temperature

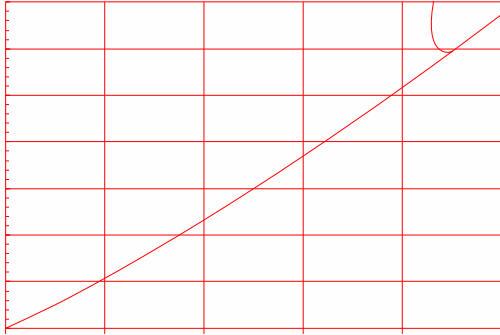
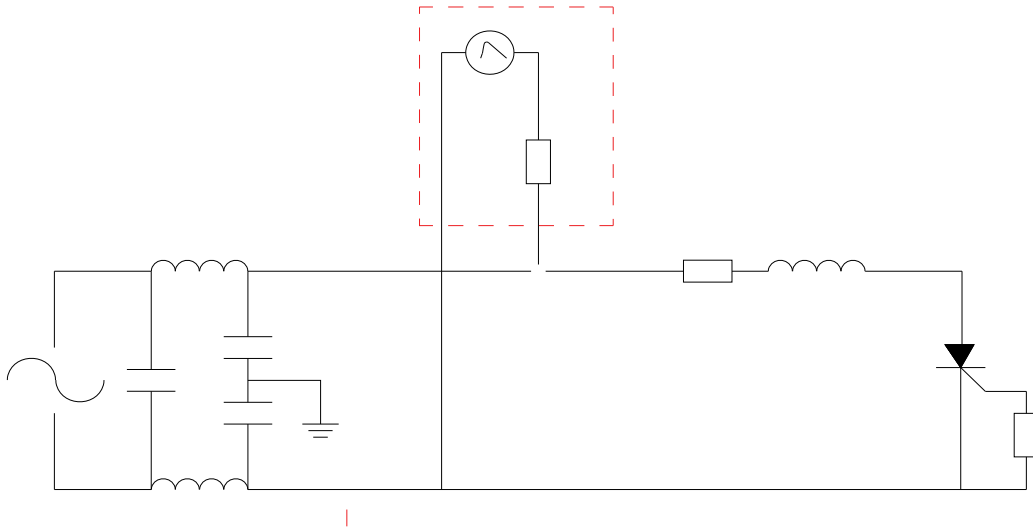


FIG.7 Test circuit for inductive and resistive loads to IEC-61000-4-5 standards.



>L\$\$, I''

 >]Y>]Y' A]WfcY'YWhfcb]Wg'7c"z'@hX"

CfXYf'WcXY'	Jc`hU[Y' J8FA#JFFA'flJL'	= ; Hfl 5L'	DUW_U[Y'	6UgY'ehm" fidWgL'	8Y]jYfm' a cXY'
>L\$\$, I'	,\$\$'	@&\$\$'	HC!-&'	%z\$\$\$'	6 i`_'DUW_'
>L\$\$, I!HF'				&z\$\$\$'	HUdY'/'FYY'

8cWi a Ybh'FY j]g]cb'<]ghcfm'

Date

>L\$\$, I''

>L\$\$, I''

 >]Y>]Y' A]WfcY`YWhfcb]Wg'7c"z'@hX"

D57?5 ; 9'

C I H@=B9'

>L\$\$, I''

>]Y>]Y' A]WfcY`YWhfcb]Wg'7c"z'@hX"

TEL