



A7F%\$\$!, ' ' %5'GYbg]h]jY'G7F

FYj'5"&"%

The MCR100-8 SCR provides high dV/dt rate with strong resistance to electromagnetic interface. It is especially recommended for use on residual current circuit breaker, straight hair, igniter etc. Package TO-92 is RoHS compliant.

Symbol	Value	Unit
$I_{T(RMS)}$	1	A
$V_{DRM} / V_{RRM}$	800	V
$I_{GT}$	200	$\mu A$

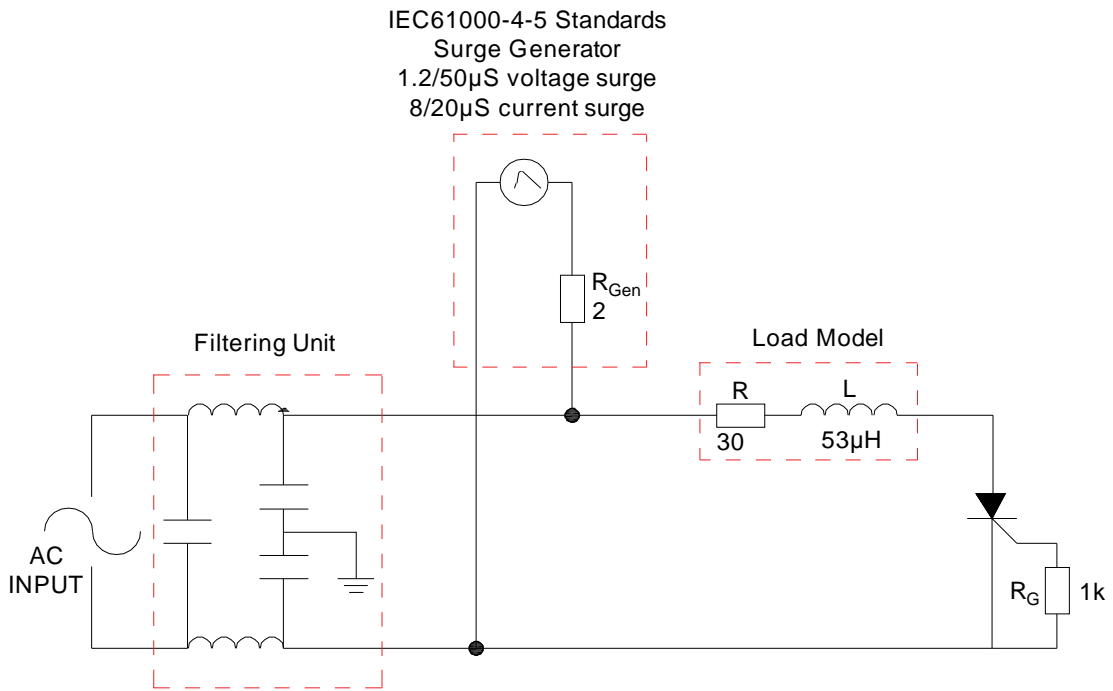
DUfU a YhYf'	Gma Vc''	JU' iY'	I b]h'
Storage junction temperature range	$T_{stg}$	-40-150	
Operating junction temperature range	$T_j$	-40-125	
Repetitive peak off-state voltage ( $T_j=25^\circ C$ )	$V_{DRM}$	800	V
Repetitive peak reverse voltage ( $T_j=25^\circ C$ )	$V_{RRM}$	800	V
Average on-state current ( $T_c = 54^\circ C$ )	$I_{T(AV)}$	0.6	A
RMS on-state current ( $T_c = 54^\circ C$ )	$I_{T(RMS)}$	1	A
Non repetitive surge peak on-state current ( $t_p=10ms, T_j=25^\circ C$ )	$I_{TSM}$	12	A
Non repetitive surge peak on-state current ( $t_p=8.3ms, T_j=25^\circ C$ )		13	
$I^2t$ value for fusing ( $t_p=10ms, T_j=25^\circ C$ )	$I^2t$	0.72	$A^2s$
Critical rate of rise of on-state current ( $I_G=2 \times I_{GT}$ )			



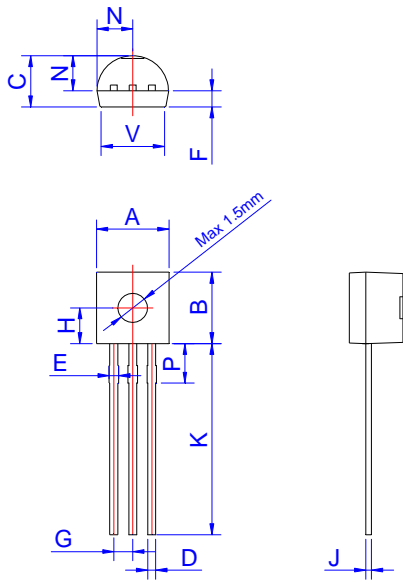




FIG.7 Test circuit for inductive and resistive loads to IEC-61000-4-5 standards.







Ref.	Dimensions					
	Millimeters			Inches		
	Min.	Typ.	Max.	Min.	Typ.	Max.
A	4.45		5.20	0.175		
B	4.32		5.33	0.170	318	
C	3.18		4.19	0.0.173		
D	0.407		0.533			
E						
F						
G						
H						
J						
K						
N						
P						
V						



