



T0610H-8K 6A TRIAC

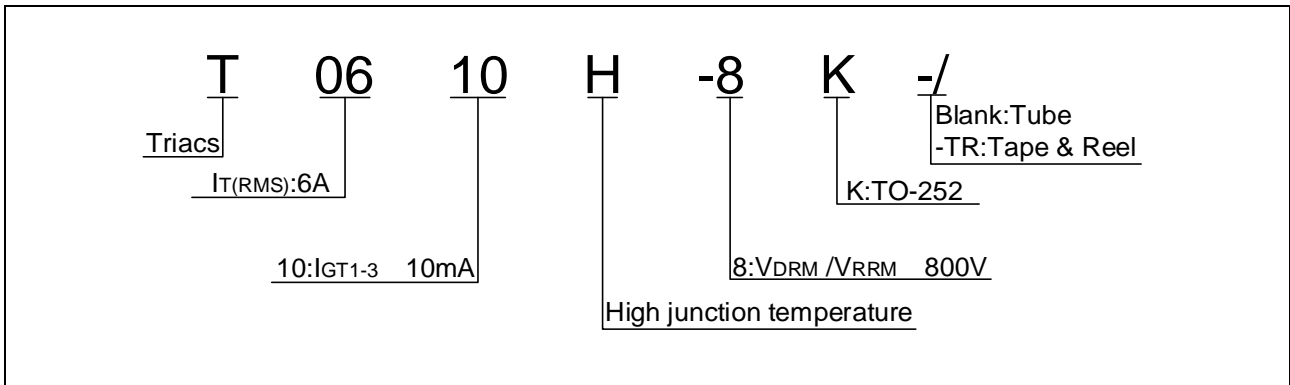
DESCRIPTION:

The T0610H-8K triac is suitable for general AC power switching. It can be used as an ON/OFF switch in applications such as heating 5 (517 t)

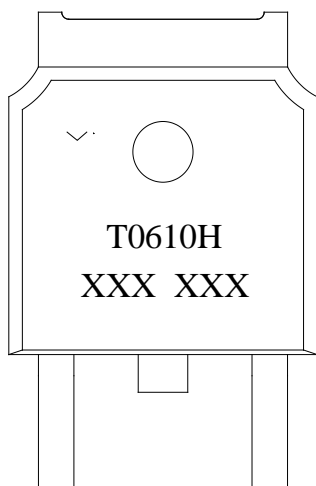
00.002 Tc 0.00-27TJ)4 d [572 Tw -23.07 -1.5 Td

Peak gate power	P _{GM}	10	W
Peak pulse voltage			

ORDERING INFORMATION



MARKING



T0610H-8K

JieJie

FIG.7: Relative variations of gate trigger current, holding current and latching current versus junction temperature

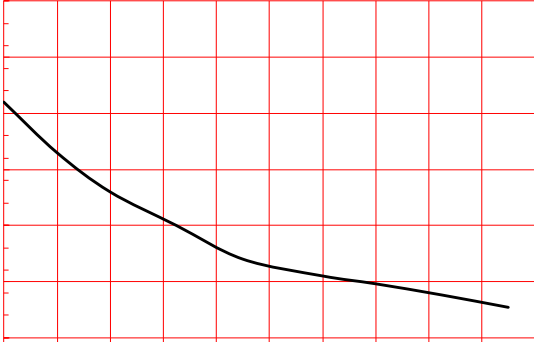
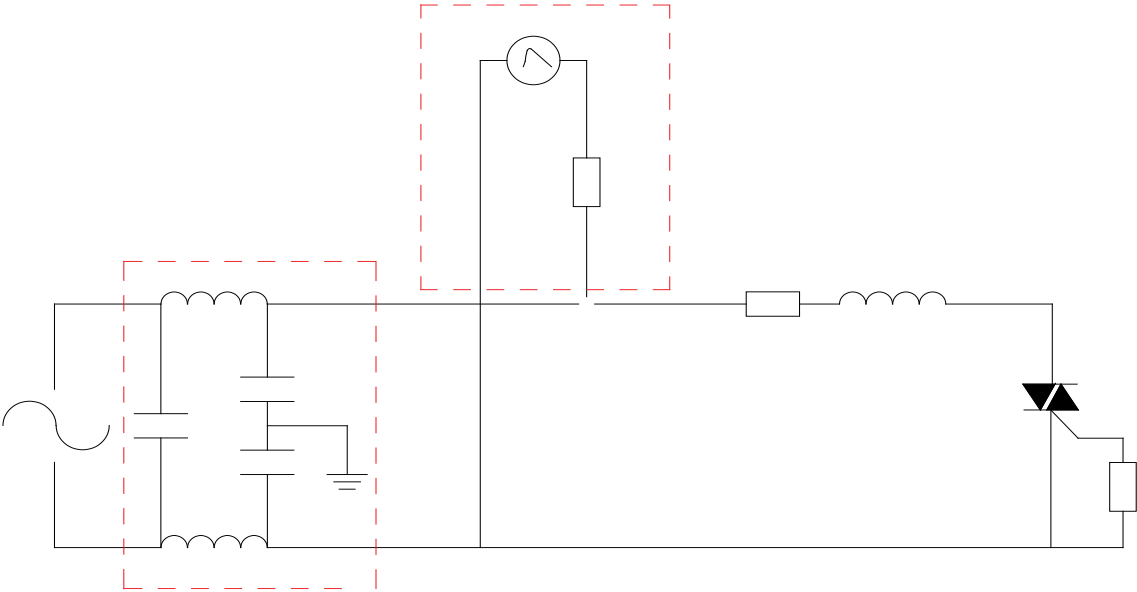


FIG.8 Test circuit for inductive and resistive loads to IEC-61000-4-5 standards



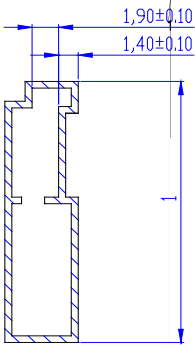
ORDERING INFORMATION

Order code	Voltage V_{DRM}/V_{RRM} (V)	IGT(mA)	Package	Base qty. (pcs)	Delivery mode
		- -			
T0610H-8K	800	10	TO-252	80	Tube
T0610H-8K-TR				2,500	Tape & Reel

Document Revision History

Date	Revision	Changes
------	----------	---------

DELIVERY MODE



Information furnished in this document is believed to be accurate and reliable. However, Jiangsu JieJie Microelectronics Co., Ltd. assumes no responsibility for the consequences of use without consideration for such information nor use beyond it. Information mentioned in this document is subject to change without notice, apart from that when an agreement is signed, Jiangsu JieJie complies with the agreement.