

JST08H-800CW 8A TRIAC

Rev.A.1.1

## DESCRIPTION:

The JST08H-800CW triac is suitable for general purpose AC switching. It can be used as an ON/OFF function in applications such as heating regulation, induction motor starting circuits, for phase control operation in light dimmers, motor speed controllers. JST08H-800CW

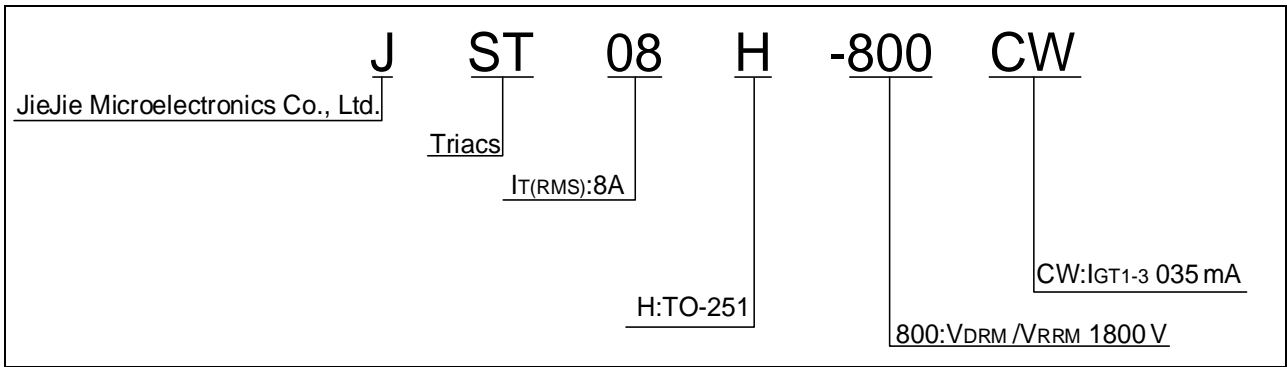
Peak pulse voltage ( $T_j=25$ ; non-repetitive, off-state; FIG.7)	$V_{pp}$	2	kV
--	----------	---	----

**ELECTRICAL CHARACTERISTICS** (unless otherwise specified)

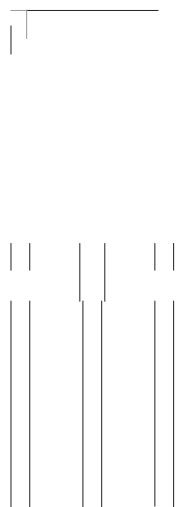
Symbol	Test Condition	Quadrant	Value		Unit
$I_{GT}$	$V_D=12V R_L=33$	- -	MAX.	35	mA
$V_{GT}$		- -	MAX.	1	V
$V_{GD}$	$V_D=V_{DRM} T_j=125$ $R_L=3.3k$	- -	MIN.	0.2	V

$I_L$   $I_G=1$  re 1[90.58 35 >>BDC 6.5 0 Td [(0)-2(.2)]TJ 0 Tc 08.8 579.72 Tm (l)Tj Tw 12 0 8.04

ORDERING INFORMATION



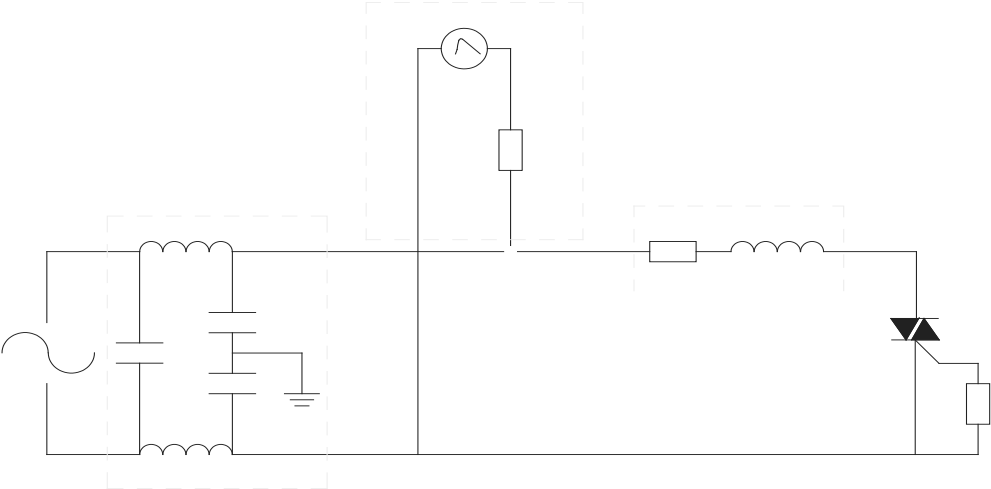
MARKING



JST08H-800CW

JieJie M

FIG.7 ÖTest circuit for inductive and resistive loads to IEC-61000-4-5 standards



ORDERING INFORMATION

Order code	Voltage $V_{DRM}/V_{RRM}$ (V)	IGT(mA)	Package	Base qty. (pcs)	Delivery <input type="text"/>
------------	----------------------------------	---------	---------	--------------------	----------------------------------

PACKAGE MECHANICAL DATA

