



JST10C-800CW 10A TRIAC

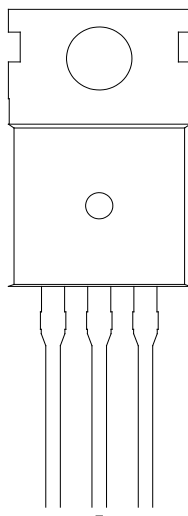
Rev.A.1.1

JST10C-800CW

ORDERING INFORMATION

J	ST	10	C	-800	CW
JieJie Microelectronics Co., Ltd.	Triacs	$I_{T(RMS)}: 10A$			
		$C: TO-220C$			$CW: I_{GT1-3} 35mA$
				$800: V_{DRM} / V_{RRM} 800V$	

MARKING

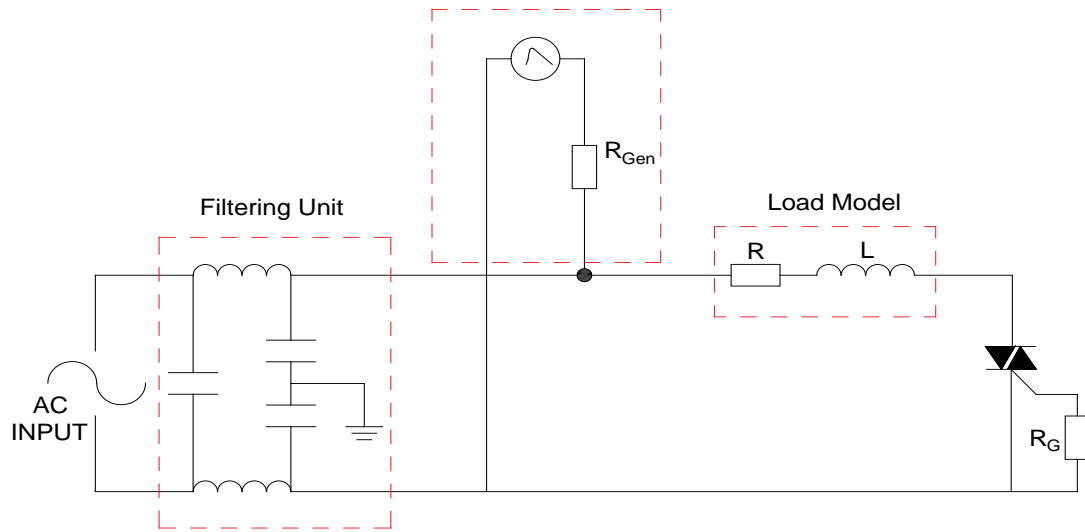


JST10C-800CW

JieJie Microelectronics Co., Ltd.

FIG.7 Test circuit for inductive and resistive loads to IEC-61000-4-5 standards

IEC61000-4-5 Standards
Surge Generator



JST10C-800CW

JieJie Microelectronics Co., Ltd.

PACKAGE MECHANICAL DATA



