



**JST12C-1200TW 12A TRIAC**

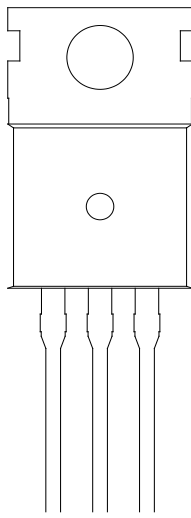
4 Tw 14.04 0 900 T8 0 5.04 371.04(T)3.6 (W)4 ( )

**JST12C-1200TW**

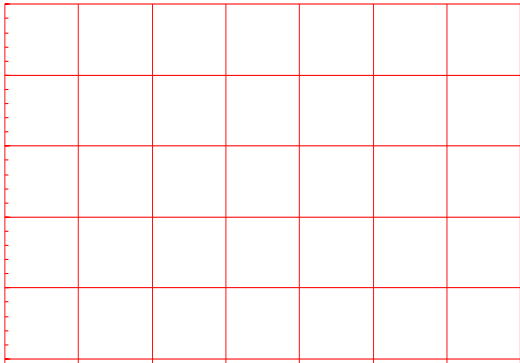
## ORDERING INFORMATION

<b>J</b>	<b>ST</b>	<b>12</b>	<b>C</b>	<b>-1200</b>	<b>TW</b>
JieJie Microelectronics Co., Ltd.	Triacs	$I_T(RMS):12A$	C:TO-220C		TW:IGT1-3 5mA
				1200:V <sub>DRM</sub> /V <sub>RRM</sub>	1200V

## MARKING

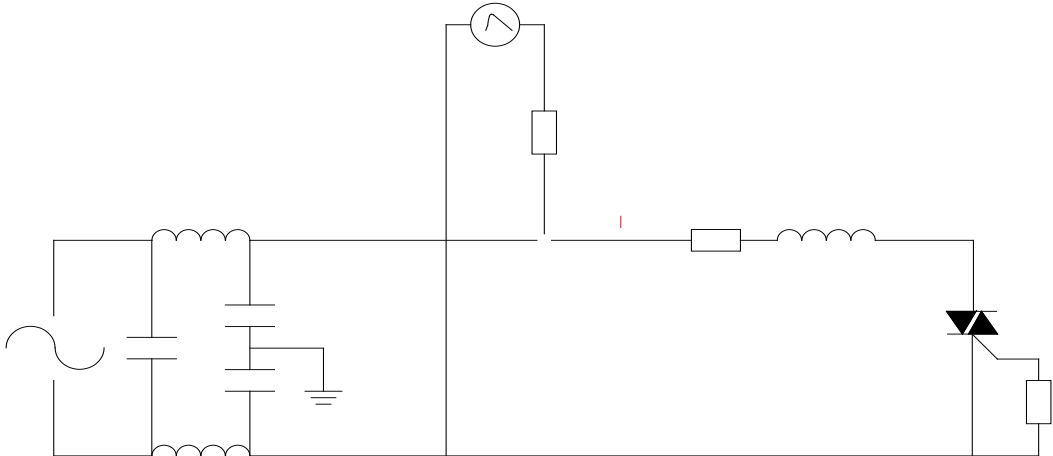


**FIG.1:** Maximum power dissipation versus RMS on-state current



**FIG.2:** RMS on-state current versus case temperature

FIG.7 Test circuit for inductive and resistive loads to IEC-61000-4-5 standards





PACKAGE MECHANICAL DATA



