



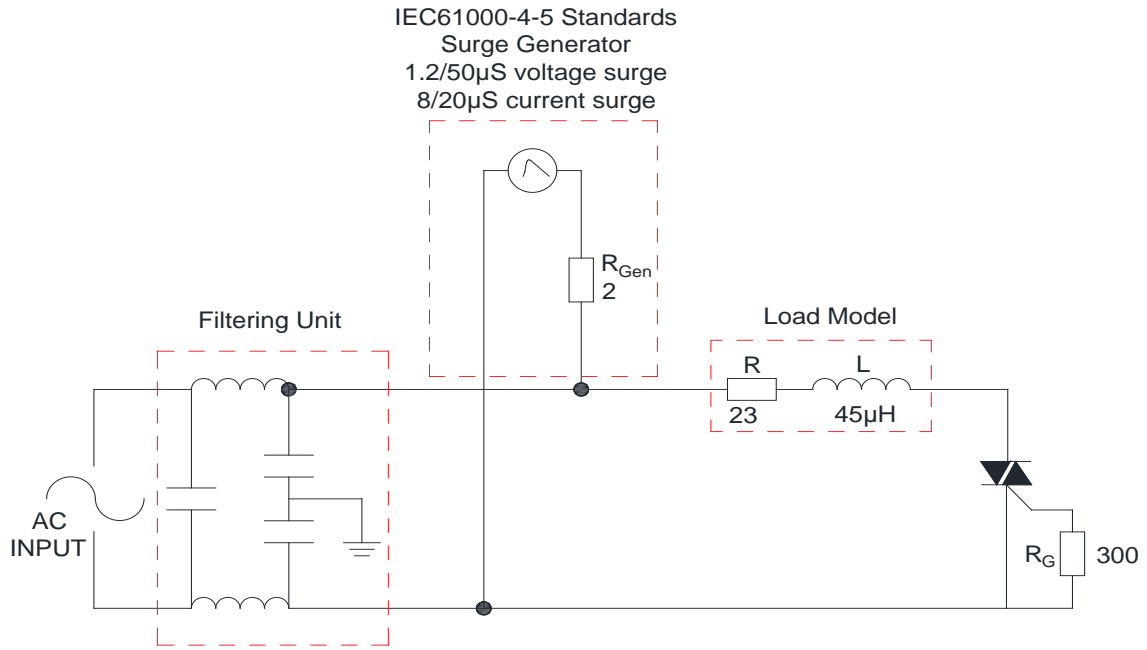
JST134C-800E 4A TRIAC

Rev.A.1.1

DESCRIPTION:

The JST134C-800E triac is suitable for general purpose AC switching. It can be used as an ON/OFF function in applications such as heating regulation, induction motor starting circuits, for phase control operation in light dimmers, motor speed controllers. From T2 terminals to external h8 -1. (or . (o)oO6 (ng)10 (k)4(l)2 (t Tc 0 Tw 3.16 0969 [(in)-(P007 Tc -0.004 Tw 2.01 00T

FIG.7 Test circuit for inductive and resistive loads to IEC-61000-4-5 standards



PACKAGE MECHANICAL DATA



JST134C-800E

JieJie M