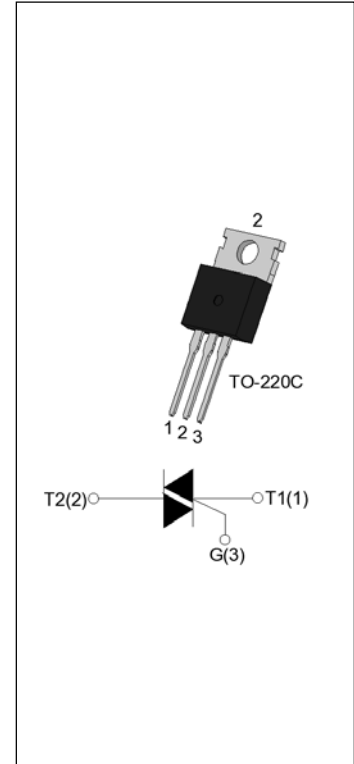


## DESCRIPTION:

6C 1200V 16A JST1,A TRIAC



## MAIN FEATURES

Symbol	Value	Unit
$I_{RM}$	16	A
$V_{RM} / V_{RM}$	1200	V
$I_G$ / /	5/5/5	mA

## ABSOLUTE MAXIMUM RATINGS

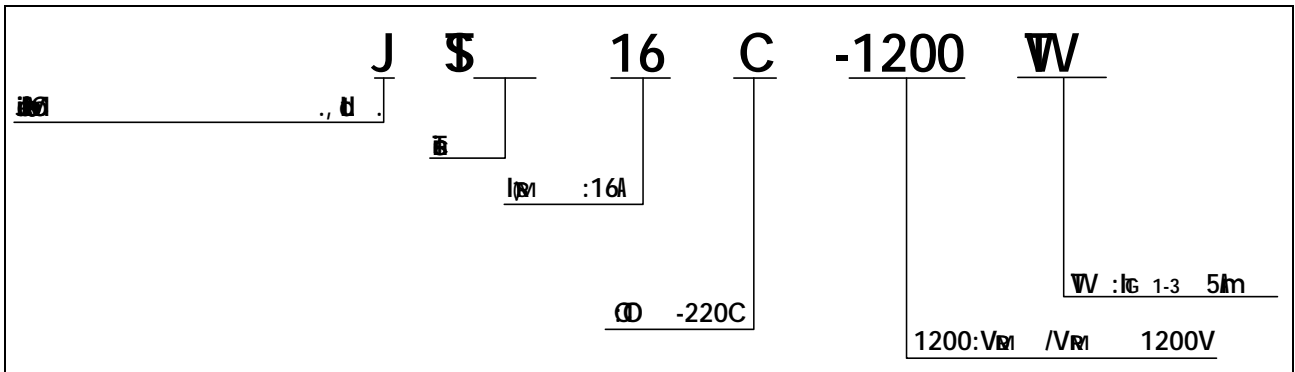
Parameter	Symbol	Value	Unit
Storage Temperature	$T_{STG}$	40-150	
Junction Temperature	$T_j$	-40-125	
Peak Reverse Voltage (j=25 °C)	$V_{RM}$	1200	V
Peak Forward Voltage (j=25 °C)	$V_{FM}$	1200	V
Peak Forward Current (c 100 °C)	$I_{FM}$	16	A
Forward Current (p=20µs, j=25 °C)	$I_{FM}$	160	A
Forward Current (p=16.6µs, j=25 °C)		176	
Forward Current Squared Time (p=10µs, j=25 °C)	$I^2t$	128	A <sup>2</sup> s
Peak Forward Current (I <sub>G</sub> =2×I <sub>G</sub> , t=100µs, j=125 °C)	$I_{FM}$	50	A /µs
Peak Forward Current (p=20µs, j=125 °C)	$I_{FM}$	4	A
Peak Forward Power (j=125 °C)	$P_{FM}$	0.5	W
Power	$P_{RM}$	10	W

$V_p$ ( $T_j=25^\circ\text{C}$ ; $\rho = 10^{-10}$ $\Omega\cdot\text{cm}$ )	$V_p$	3	$\mu\text{V}$
--	-------	---	---------------

ELECTRICAL CHARACTERISTICS ( $T_j=25^\circ\text{C}$ )

Symbol

ORDERING INFORMATION



MARKING

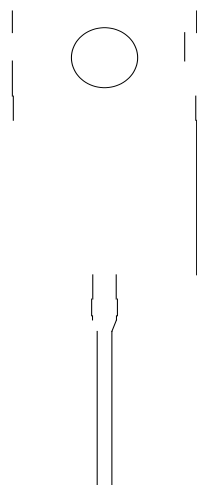




FIG.1:   
□ 

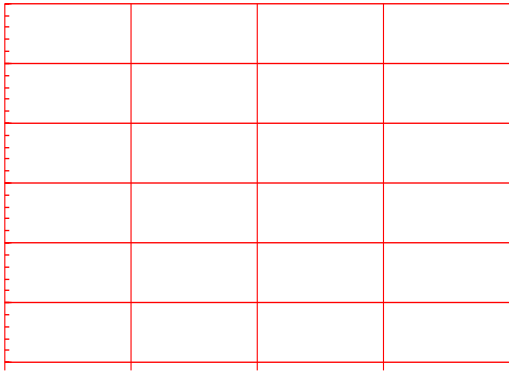
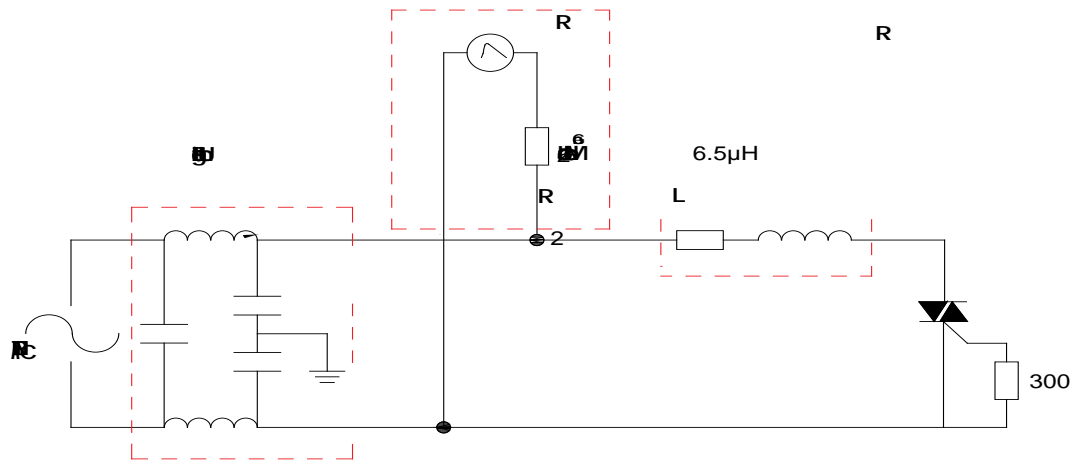


FIG.2:  □   
□ 

8.20  $\mu$ s Current surge  
5.4000-4-5



## ORDERING INFORMATION

Order code	Voltage $V_{DRM}/V_{RRM}$ (V)	IGT(mA)	Package	Base qty. (pcs)	Delivery mode
		- -			
<b>JST16C-1200TW</b>	<b>1200</b>	<b>5</b>	<b>TO-220C</b>	<b>50</b>	<b>Tube</b>

## Document Revision History

<b>①</b>	<b>②</b>	<b>③</b>
----------	----------	----------



