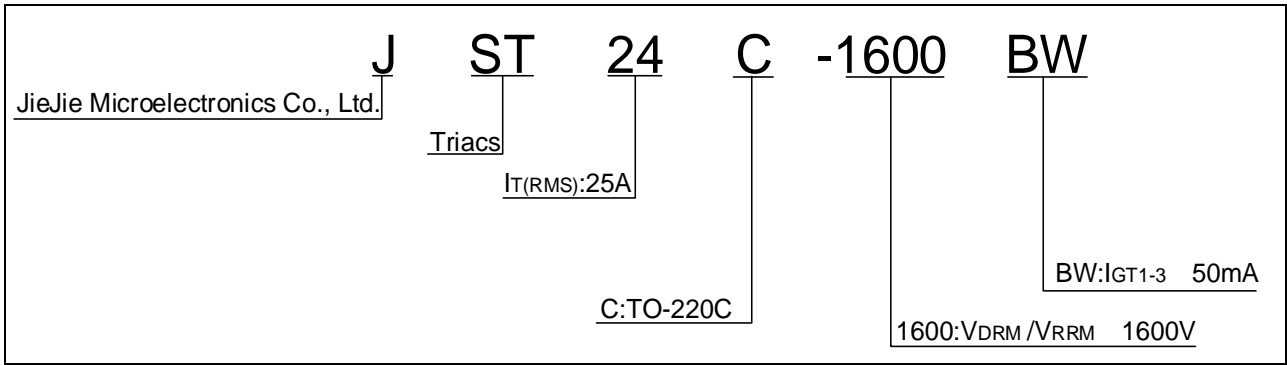


Peak pulse voltage ($T_j=25$; non-repetitive, off-state; FIG.7)	V_{pp}	2.5	kV
--	----------	-----	----

ELECTRICAL CHARACTERISTICS($T_j=25$ unless otherwise specified)

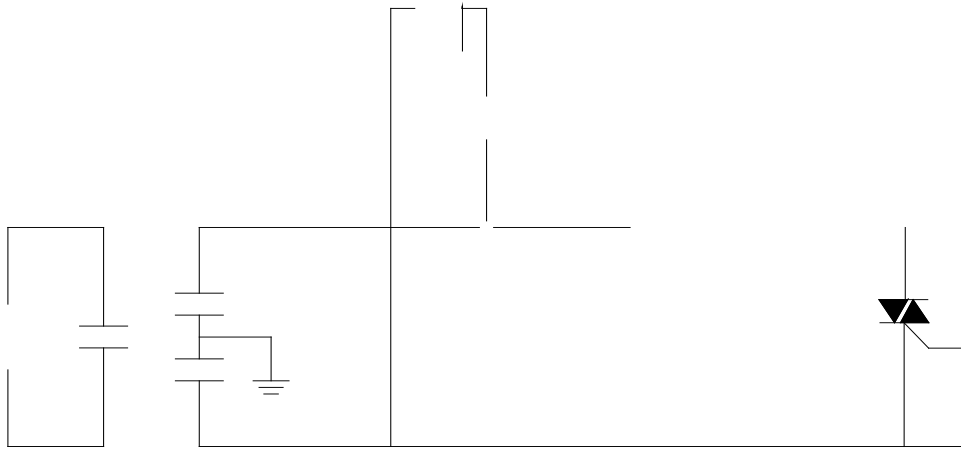
Symbol	Test Condition	Quadrant	Value	Unit
I_{GT}	$V_D=12V$ $R_L=33$	- -	MAX.	50 mA

ORDERING INFORMATION



MARKING

FIG.7 Test circuit for inductive and resistive loads to IEC-61000-4-5 standards



JST24C-1600

 JieJie Microelectronics Co., Ltd.

PACKAGE MECH

