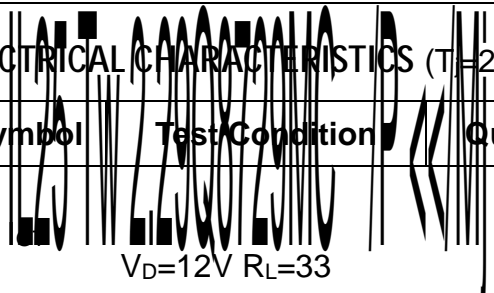


ELECTRICAL CHARACTERISTICS (T_a=25 unless otherwise specified)

Symbol	Test Condition	Quadrant	Value	Unit
--------	----------------	----------	-------	------



- -

MAX.

50

mA mA mA 8.08 0

V_D=12V R_L=33

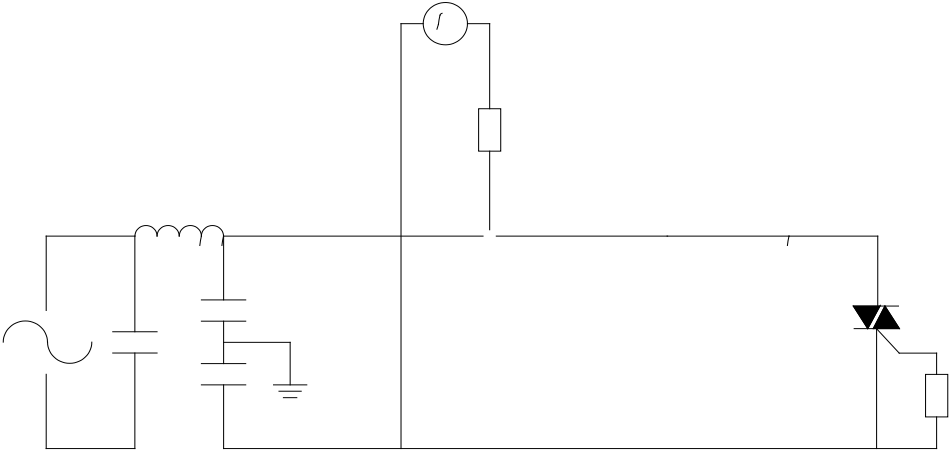
ORDERING INFORMATION

J ST 41 SJ -600 B

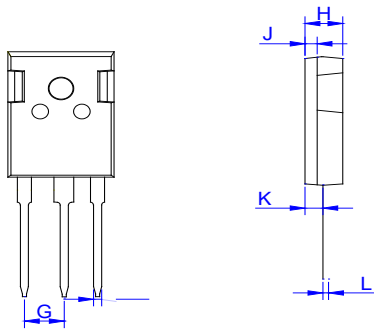
_____ |

FIG.1: u6 (n 22 4(s)1 (ue Tw 10 0 Td ()Tj ET 55.25.3649.56 484.8

FIG.7 Test circuit for inductive and resistive loads to IEC-61000-4-5 standards



PACKAGE MECHANICAL DATA



Ref.	Dimensions					
	Millimeters			Inches		
	Min.	Typ.	Max.	Min.	Typ.	Max.
A	15.50		16.10	0.610		0.634
B1	3.10		3.50	0.122		0.138
C	19.70		20.30	0.776		0.799
D	2.90		3.30	0.114		0.130
E	1.90		2.30	0.075		0.091
F	1.00		1.40	0.039		0.055
G		5.44			0.214	

H	4.80	5.20	0.189	0.205
J	1.90	2.10	0.075	0.083
K	2.20	2.50	0.087	0.098
L	0.41	0.79	0.016	0.031

