



## JST41T-1600BW 40A TRIAC

Rev.A.1.0

### DESCRIPTION:

The JST41T-1600BW triac is suitable for general purpose

AC switching. It can be used as an ON/OFF function2 Tw 0eUT(i)6id [ hg)10 (e4)12C s (or)6e su(f



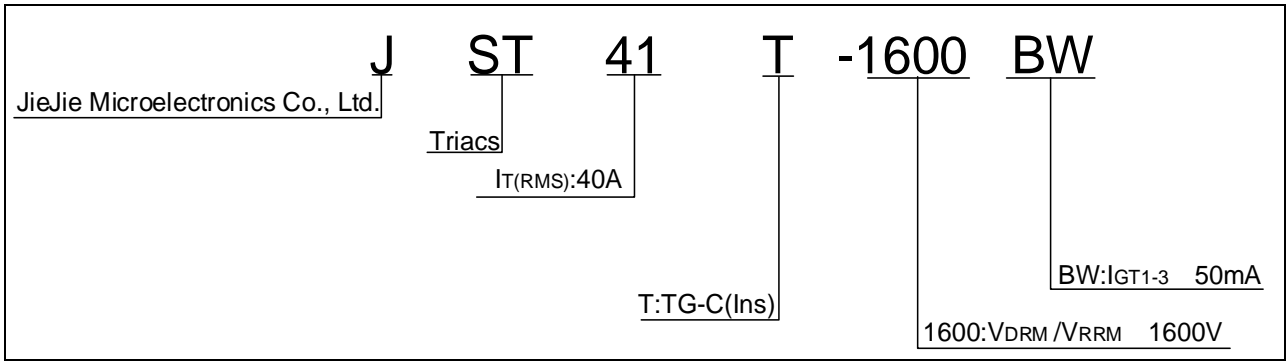
# JST41T-1600BW

Peak gate power	$P_{GM}$	40	W
Peak pulse voltage ( $T_j=25$ ; non-repetitive, off-state; FIG.7)	$V_{pp}$	1.2	kV

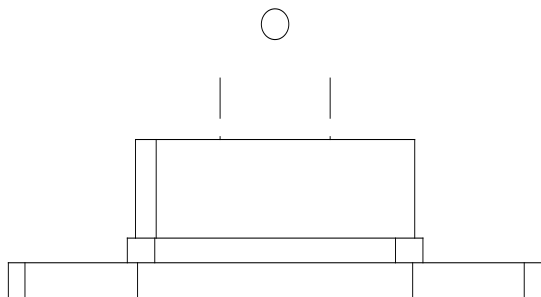
## ELECTRICAL CHARACTERISTICS( $T_j=25$ unless otherwise specified)

Symbol	Test Condition	Quadrant	Value	Unit
$I_{GT}$				

ORDERING INFORMATION



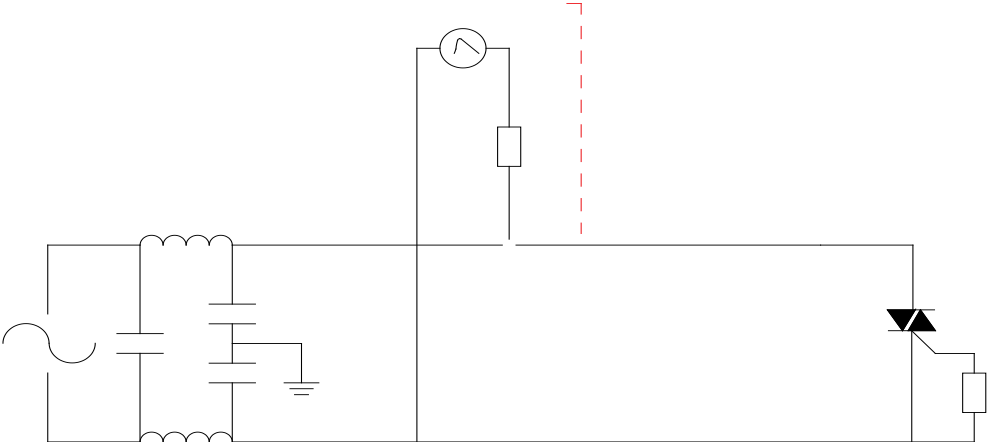
MARKING



**FIG.1:** Maximum power dissipation versus RMS on-state current

**FIG.2:** RMS on-state current versus case temperature

FIG.7 Test circuit for inductive and resistive loads to IEC-61000-4-5 standards



**ORDERING INFORMATION**



