



T0650H-8E 6A TRIAC

Rev.A.1.0

DESCRIPTION:

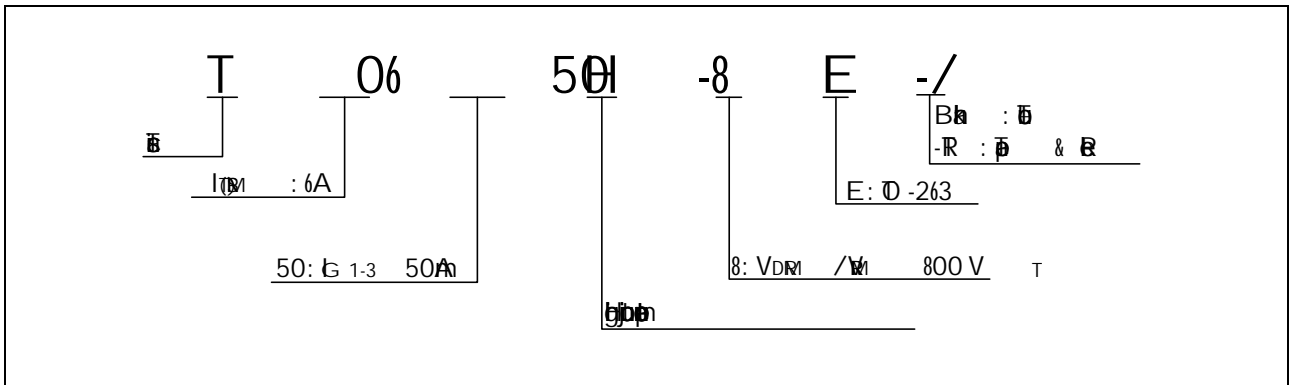
650H-8E 6A TRIAC
by tabdaa00 F 0h

I_{G1} ($T_j=25^\circ\text{C}$; $V_D=12\text{V}$; $R_L=33\Omega$)	V_p	4	V
--	-------	---	---

ELECTRICAL CHARACTERISTICS

Symbol	Test Condition	Quadrant	Value	Unit
I_G	$V_D = 12\text{V}$ $R_L = 33\Omega$	- -	50	A
V_G		- -	1	V
V_G	$V_D = V_{DM}$ $T_j = 150^\circ\text{C}$ $R_L = 3.3\text{K}$	- -	0.2	V
I_L	$I_G = 1.2\text{G}$	-	70	A
			100	A
I_H	$I_T = 100\text{A}$		50	A

ORDERING INFORMATION



MARKING

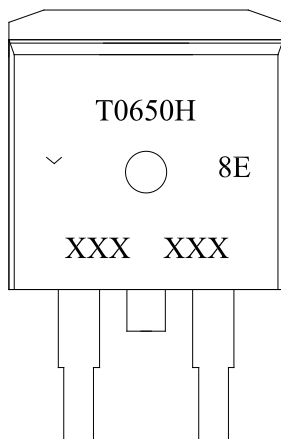
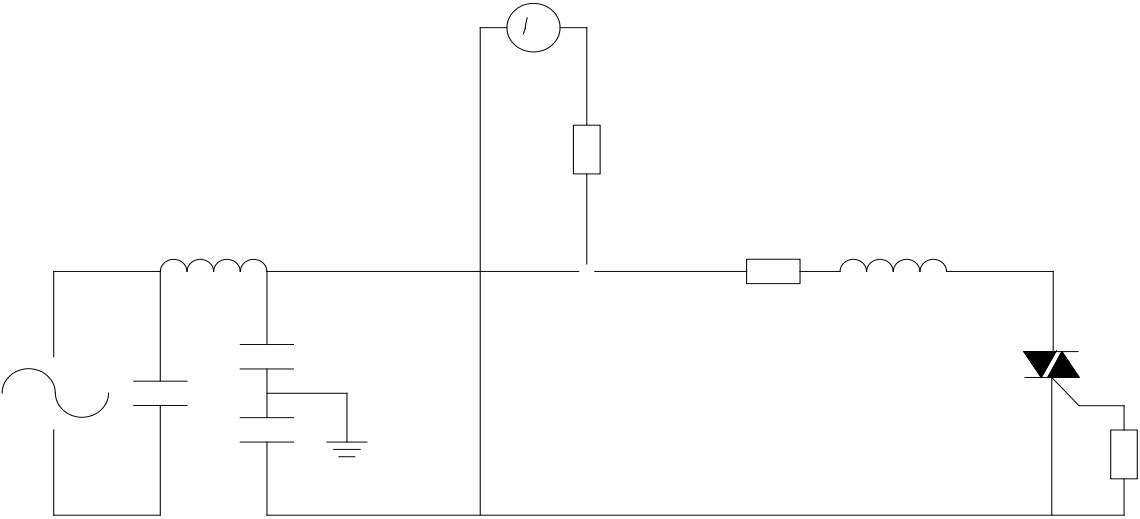


FIG.7: Pin 1

1

(

g



DELIVERY MODE



